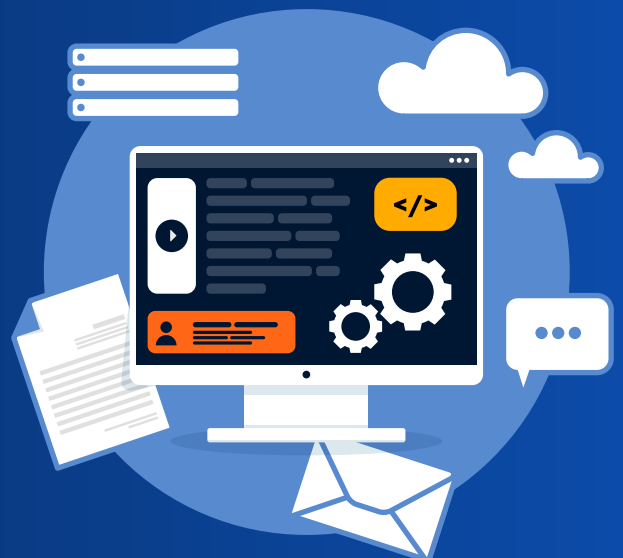


**TOP 500**

# COMPUTER AWARENESS

**MCQs**

For All Government  
Exams



## Top 500 Computer Awareness MCQs

1. Which is not a RAM Type?

- (A) DRAM
- (B) SRAM
- (C) SDRAM
- (D) EPRAM
- (E) None

Ans (D) EPRAM

2. RAM is always located on the motherboard. If you manually want to install

the RAM then, the first step is?

- (a) Do not install it yourself.
- (b) Unplug the cables
- (c) Shutdown the Computer
- (d) Both (B) & (C)
- (E) None

Ans Both (B) & (C)

3. When you change the color and background of a chart in a spreadsheet, you are:

- (A) Formatting
- (B) Merging
- (C) Painting
- (D) Calculating
- (E) None

Ans (A) Formatting

4. What is the name of the informational video series released in the Health

Ministry's social media platforms?

- (A) COVID Warrior
- (B) COVID GuruKool
- (C) COVID DRONA
- (D) COVID ASTRA
- (E) None

Ans (B) COVID GuruKool

5. E-governance is:

- A. Improving the way the government functions
- B. Making employees aware of the basics of computing
- C. Delivering public services by means of internet

D. Framing of laws by the government for online interactions

E. None

Ans (C) Delivering public services by means of internet

6. Mapmakers are GPS to?

- a) Store Geographical Information
- b) Use Geographical Information
- c) View Geographical Information
- d) Store, Use & View Geographical Information
- e) None of these

Ans (D)

7. From what has the term 'Wi-Max' been derived?

- a) Worldwide Interoperability for Microwave Access
- b) World Interconnection for Microwave Access
- c) Worldwide Interchangeability for Microwave Access
- d) Worldwide Interconnection for Multiple Access
- e) None

Ans (a) Worldwide Interoperability for Microwave Access

8: Superscript, subscript, outline, emboss, engrave all these are collectively known as?

- a) Font Styles
- b) Font Effects
- c) Word Art
- d) Text Effect
- e) None

Ans (b) Font Effects

9. A system bus:  
A. runs at 100 MHz  
B. Transports data between the CPU and memory.  
C. Uses a set of serial electrical paths.  
D. Is always the same size.  
E. None  
Ans (B)

10: How you can manually break up the line breakup in MS-Word?  
a) Space + Enter  
b) Ctrl + Enter  
c) Alt + Enter  
d) Shift + Enter  
e) None  
Ans (D) Shift + Enter

11: To split a table in MS-Word, which shortcut key is used?  
a) Alt + Shit + Ctrl  
b) Alt + Shift + Del  
c) Ctrl + Shift + Enter  
d) Alt + Ctrl + Enter  
e) None  
Ans (C) Ctrl + Shift + Enter

12: What is the Portrait & Landscape are called in MS-Word?  
A. Page Size  
B. Paper Layout  
C. Page Orientation  
D. All of these  
E. None  
Ans (C) Page Orientation

13: The shortcuts keys, Ctrl+ Shift + plus sign are used for character formatting of the following:  
A. Underline Words, Not Spaces  
B. Superscript  
C. Case of Letters  
D. All Capitals Letters  
E. None  
Ans (B) Superscript  
Pressing the same key combination again makes the text normal.  
Ctrl + = is used for subscript.

14. Bar code symbols are ready by the bar-code reader by using:  
A. Photoelectric Scanner  
B. Printer  
C. Keyboard  
D. Mouse  
E. None  
Ans (A) Photoelectric Scanner

15. Which is not a type of operating system?  
(A) Real Value Operating System  
(B) Distributes Operating System  
(C) Network Operating System  
(D) Time-Sharing Operating System  
(E) None  
Ans (A) Real Value Operating System

16. Which is not a Network device?  
(A) Switch  
(B) Hub  
(C) Star  
(D) Router  
(E) None  
Ans (C) Star

17. Which network security feature prevents users on a network from using program and information that is unauthorized?  
A. Firewall  
B. Antivirus  
C. Jammer  
D. Security Plus  
E. None  
Ans (A) Firewall

18. In MS-Word, you can detect spelling and grammar errors by pressing the key(s):  
a) Shift + F7  
b) Ctrl + F7  
c) Alt + F7  
d) F7  
e) None  
Ans (D) F7

19. Unsolicited commercial email is commonly known as?

- A. Spam
- B. Ce-Mail
- C. Hoaxes
- D. Hypertext
- E. None

Ans (A) Spam

20. Which of the following are sequentially arranged steps for installing a software?

- (a) Download, Run, Install
- (b) Run, Download, Install
- (c) Run, Install, Download
- (d) Download, Install, Run
- (e) None

Ans (d) Download, Install, Run

21. Which of the following is not a Disk Operating System (DOS) Command?

- (A) del
- (B) dir
- (C) how
- (D) format
- (E) None

Ans (C) how

22. What type of component may come in a dual-core version?

- (a) RAM
- (b) SSD
- (c) PCI Card
- (d) CPU
- (E) None

Ans (d) CPU

23. DoS is an acronym for:

- (a) Data Operating System
- (b) Disc Operating System
- (c) Date Operating Section
- (d) Disc Operating Station
- (e) None of these

Ans (e)

24. One ZB is made up of \_\_\_\_\_ :

- (a) 1024 PB
- (b) 1024 EB
- (c) 1024 BB

(d) 1024 YB

(e) None

Ans (b)

25. Which is non-volatile memory?

- (A) Data is saved regardless of power Off
- (B) Lose data when power is Off
- (C) Not related to any kind of computer memory
- (D) Same as Cache Memory
- (E) None

Ans (A) Data is saved regardless of power Off

26. The primary memory of a computer includes:

- (a) RAM only
- (b) CACHE only
- (c) RAM and CACHE both
- (d) Hard Device only
- (e) None

Ans (a) RAM only

27. What is the full form of GUI in terms of computers?

- (a) Graphical user Instrument
- (b) Graphical unified interface
- (c) Graphical unified instrument
- (d) Graphical user interface
- (e) None

Ans (d) Graphical User Interface

28. In which of the following form, data is stored in the computer?

- (a) Decimal
- (b) Binary
- (c) Hexa-Decimal
- (d) Octal
- (e) None

Ans b) Binary

29. In MS-Excel, which of the following formula is not entered correctly?

- (A) =22+825
- (B) 137+549
- (C) =B33+V32
- (D) =B2/A15
- (E) None

Ans (B) 137+549

30. For each instruction of a program in the memory, the CPU goes through a:

- (A) decode – fetch – execute sequence
- (B) execute – store – decode sequence
- (C) fetch – decode – execute sequence
- (D) fetch – execute – decode sequence
- (E) None

Ans (C) fetch – decode – execute sequence

31. Which of the following is the fastest memory?

- a) Secondary Memory
- b) Auxiliary Memory
- c) Cache Memory
- d) Virtual Memory
- e) None

Ans (C) Cache Memory

32. Which is the correct arrangement of memories types from highest to lowest speed from flowing options?

- (A) secondary storage, main memory, cache, registers
- (B) registers, cache, secondary storage, main memory
- (C) registers, cache, main memory, secondary storage
- (D) cache, registers, main memory, secondary storage
- (E) None

Ans (C) registers, cache, main memory, secondary storage

33. In Microsoft PowerPoint, the best way to insert a new slide in a presentation is to use \_\_\_\_\_

- (A) Normal View
- (B) Special View
- (C) Slide Show View
- (D) Slide Sorter View
- (E) None

Ans (D) Slide Sorter View

34. In Microsoft Excel, which one of the following tools allows extracting the significance from a large detailed data set?

- (A) Data Extractor
- (B) Data Verifier and Validator
- (C) Pivot Table
- (D) Vertical Hash Lookup
- (E) None

Ans (C) Pivot Table

35. In a computer with Windows operating systems, files are stored in locations called?

- (A) Storages
- (B) Programs
- (C) Directories
- (D) Stack
- (E) None

Ans (C) Directories

36. In the email address

xyz@yahoo.com, the “@” stands for:

- (A) At
- (B) At the rate
- (C) At rate
- (D) All are correct
- (E) None

Ans (A)

37. In the Internet business, ISP stands for:

- (A) Internet System Protocol
- (B) Internet Service Provider
- (C) Internet System Provider
- (D) Internet Service Protocol
- (E) None

Ans (B) Internet Service Provider

38. In MS-Word, what is the smallest font size generally that we can use to text

in Word?

- (A) 8
- (B) 7
- (C) 1
- (D) 4
- (E) None

Ans (A) 8

39. The files can be saved in which of the following device?

- (A) Monitor
- (B) Compact Disc
- (C) Printer
- (D) Speaker
- (E) None

Ans (B) Compact Disc

40. In MS Word, Thesaurus tool has made for the Purpose of \_\_\_\_\_

- (A) Spell Checking
- (B) Synonyms and Antonyms words
- (C) Spelling Suggestions
- (D) Grammar Correction
- (E) None

Ans (B) Synonyms and Antonyms words

41. The virus attacks on the computer can be stopped or prevented with the help of which one of the following?

- (A) Security Wall
- (B) Virus eliminator software
- (C) Antivirus Software
- (D) Firewall
- (E) None

Ans (C) Antivirus Software

42. Network Interface Card is a(n)\_\_\_\_\_ device:

- A. Input
- B. Output
- C. Input/Output
- D. Storage
- E. None

Ans (C) Input/Output

43. The most popular technique used to automate sending of a customized letter to different recipients where most of the content is the same except the customer address of MS Word?

- (A) Send mail to all
- (B) Mail Merge
- (C) Design, review and send
- (D) Bulk customized mail
- (E) None

Ans (B) Mail Merge

44. Dot Matrix Printer is an example of:

- (a) Input Device
- (b) Output Device
- (c) Processing Unit
- (d) Integral Device
- (e) None

Ans (b) Output Device

45. Which of the following technique is popular in academic testing?

- (A) OMR
- (B) OLE
- (C) OCR
- (D) MICR
- (E) None

Ans (A) OMR

OMR stands for Optical mark recognition

46. One Mega Byte (MB) is equal to which of the following:

- (A) 1 trillion bytes
- (B) 1048 bytes
- (C) 1024 KB
- (D) 256 KB
- (E) None

Ans (C) 1024 KB

47. Speed of CPU is measured in

- (A) MHz
- (B) GHz
- (C) Hz
- (D) All of these
- (E) None

(D) All of these

Ans: B

48. Which of the following is an advantage of the view in databases?

- A) Data Security
- B) Hiding of Complex Queries
- C) Derived Columns
- D) All of the Above
- E) None

Ans (D) All of the Above



49. The term HTTP stands for Hypertext Transfer Protocol. Who has developed this protocol to transfer information over the internet?

- A) Tim Berners Lee
- B) Bill Gates
- C) Sundar Pichai
- D) Sandeep Singh
- E) None

Ans (A) Tim Berners Lee

50. Which of the following is the extension of A Microsoft Word file?

- (A) .document
- (B) .txt
- (C) .doc
- (D) .file
- (E) None

Ans (C) .doc

51. Which code is used in Cheque?

- (A) OMR
- (B) Scanner
- (C) Plotter
- (D) MICR
- (E) None

Ans (D) MICR

MICR stands for Magnetic ink character recognition.

52. To run thesaurus which key will be pressed?

- (A) Shift + F12
- (B) Shift + F7
- (C) Shift + F10
- (D) Shift + F11
- (E) None

Ans (B) Shift + F7

Thesaurus is a tool in Microsoft Word which is used to find the synonyms of selected words.

53. Which type of security is provided by 'https'?

- A. TCP
- B. TLS
- C. SSL
- D. Only B & C
- E. All A, B & C

Ans (D)

54: The key used to restart a computer is:

- A. Del + Ctrl
- B. Backspace + Ctrl
- C. Ctrl + Alt + Del
- D. Reset
- E. None

Ans (C) Ctrl + Alt + Del

55. To host a web site which of the following is required?

- (A) Web Server
- (B) Exchange Server
- (C) Mail Server
- (D) Database Server
- (E) None

Ans (A) Web Server

56: Which file Format can be added to a PowerPoint show?

- A. .jpg
- B. .gif
- C. .wav
- D. All of the above
- E. None

Ans (D) All of the above

57. Adobe developed\_\_\_\_\_, which allows the document to be transmitted and stored without loss of formatting.

- A. Defragmentation
- B. Assembler Document Format
- C. Filtering Format
- D. Portable Document Format
- E. None

Ans (D) Portable Document Format

58. In MS Word, you can move and copy text:

- A. Within a word document
- B. Between word document
- C. Between office application
- D. All of the above
- E. None

Ans (D) All of the Above

59. Which is of the following is the fastest memory?

- A) Secondary Memory
- B) Auxiliary Memory
- C) Cache Memory
- D) Virtual Memory
- E) None

Ans (C) Cache Memory

60. Bandwidth refers to:

- (A) The amount of data that can be transmitted through a communication channel.
- (B) Protocol limitations
- (C) The speed of the communication device
- (D) A transmission medium
- (E) None

Ans (A)

The amount of data that can be transmitted through a communication channel.

61. Which of the following is not an option of edit menu

- A. Cut
- B. copy
- C. Paste
- D. Page setup
- E. None

Ans D :- Page setup

62. The secondary storage device is needed to?

- (A) Perform arithmetic and logical operations
- (B) Communicate on a network
- (C) Print output result
- (D) Store large volumes of data that exceed the capacity of the main memory.
- (E) None

Ans (D)

63. What is the language used by most of the DBMSs for helping their users to access data

- A. Assembly level language
- B. C++
- C. Query Language

D. 1GL

E. None

Ans (c) Query language

64. Which command is used for inserting records in database?

- A. INSERT
- B. ADD
- C. Both 'a' and 'b'
- D. None of these
- E. None

Ans (A) INSERT

65. If you need to duplicate the entire disk , which command will you use

- A. Copy
- B. Diskcopy
- C. Chkdsk
- D. Format
- E. None

Ans (B) Diskcopy

66. Computer Virus is

- A. A hardware
- B. Windows tool
- C. A computer program
- D. None of these
- E. All of the above

Ans (C) A computer program

67. \_\_\_\_\_ Systems use a light beam to scan input data and convert it into

electrical signals, which are sent to the computer for processing.

- A. Image recognition
- B. Optical recognition
- C. PDF
- D. Application
- E. None of these

Ans (B) Optical recognition

68. Which virus spread in application software

- A. Macro Virus
- B. boot virus
- C. file virus
- D. Anti-virus
- E. None

Ans (A) Macro Virus



69. An anti virus is a

- A. Program code
- B. Computer
- C. Company name
- D. Application
- E. None

Ans (A) Program code

70. First boot sector virus is

- A. Computed
- B. mind
- C. brain
- D. Cloner
- E. None

Ans (C) brain

71. Error in a program is called

- A. bug
- B. debug
- C. virus
- D. Noise
- E. None

Ans (A) bug

72. Error which occurs when user tried to use a device which is not switched ON is classified as

- A. user-defined message
- B. half message
- C. execution error message
- D. built in message
- E. None

Ans (C) execution error message

73. Data representation in a computer uses the number system

- A. Decimal
- B. Number
- C. Binary
- D. Integers
- E. None

Ans (A) Binary

74. The basic architecture of computer was developed by

- A. John Von Neumann
- B. Charles Babbage
- C. Blaise Pascal
- D. Robert Noyce
- E. None

Ans (A) John Von Neumann

75. The binary equivalent of decimal number 99 is

- A. 1110001
- B. 1110100
- C. 1100011
- D. 1111001
- E. All are wrong

Ans (C) 1100011

76. Arranging customers names in ascending order is an example of

- A. process
- B. information processing
- C. process
- D. Information
- E. None

Ans (B) information processing

77. Header is

- A. Any text printed at the top of every page
- B. Any graphics printed at the top of every page
- C. Any text or graphics printed at the top of particular page
- D. Any text or graphics printed at the top of every page
- E. None

Ans (D) Any text or graphics printed at the top of every page

78. This case converts first character of first word of selected sentence to capital

- A. sentence
- B. upper
- C. toggle
- D. Title
- E. None

Ans (A) sentence

79. Sometimes sudden power failure lead to the loss of data if a desktop computer is directly connected to the power plug. Which device should be attached to the computer for saving this kind of data loss?

(A) Printer

- (B) Hard Disk
  - (C) UPS
  - (D) Nuclear Power Plant
  - (E) None
- Ans (C) UPS

80. Which of the following will you option for saving the file

- A. Save button standard toolbar
- B. Save button from file menu
- C. By pressing Ctrl + S
- D. All of these
- E. None

Ans (D) All of these

81. By default the top margin in the word document is

- A. 1 inch
- B. 2 inch
- C. 3 inch
- D. 1½ inch
- E. None

Ans (A) 1 inch

82. By default the right margin in the word document is

- A. 1 inch
- B. 2 inch
- C. 3 inch
- D. 1 ¼ inch
- E. None

Ans (D) 1 ¼ inch

83. The Field names are enclosed within

- A. <<>>
- B. >><<
- C. >>>>
- D. <<<<
- E. None

Ans (A) <<>>

84. You can use the following objects created in MS-word in a web page

- A. Auto-shapes
- B. Bullets
- C. tables and charts
- D. All of these
- E. None

Ans (D) All of these

85. You can merge the main document with data source in Excel. In mail merge operation, Word is usually

- A. server
- B. source
- C. client
- D. none of above
- E. All of the above

Ans (C) client

86. Blinking point which shows your position in the text is called

- A. Cursor
- B. position
- C. Blinker
- D. None of these
- E. None

Ans (A) Cursor

87. You can use the formula palette to

- A. Format cells containing numbers
- B. create and edit formula containing functions
- C. enter assumptions data
- D. copy a range of cells
- E. None

Ans (B) create and edit formula containing functions

88. The Name box on to the left of formula bar

- A. shows the name of workbook currently working on
- B. shows the name of worksheet currently working on
- C. shows the name of cell address or range currently working on
- D. None of above
- E. All are wrong

Ans (C) shows the name of cell address or range currently working on

89. Which of the following is not the correct method of editing the cell content?

- A. Press the Alt key
- B. Press the F2 key
- C. Click the formula bar
- D. Double click the cell
- E. None

Ans (A) Press the Alt key

90. Which command lists the contents of current directory of a disk

- A. Copy
- B. Tree
- C. CD
- D. Dir
- E. None

Ans (D) Dir

91. \_\_\_\_\_ Devices accept the spoken word through a microphone and convert it into binary code that can be understood by the computer.

- A. Speech recognition
- B. Handwriting recognition
- C. Peripheral
- D. All of the above
- E. None of these

Ans (A) Speech recognition

92. Which of the cell pointer indicates you that you can make selection?

- A. Doctors symbol (Big Plus)
- B. small thin plus icon
- C. Mouse Pointer with anchor at the tip
- D. None of above
- E. None

Ans (A) Doctors symbol (Big Plus)

93. When a customer makes an online hotel booking, the data base is update in

- A. Batch mode
- B. Pseudo real- time
- C. 2 Days
- D. All of these
- E. None

Ans (B) Pseudo real- time

94. DBMS is

- A. Collection of data
- B. Set of programs to access those data
- C. Set of program to update those data
- D. All of these
- E. None

Ans (D) All of these

95. It is a collection of logically related information

- A. Folder
- B. Information
- C. Processing
- D. File
- E. None

Ans (D) File

96. COUNT command is used to

- A. Count the number of data fields in an active database file
- B. Count the number of data files which are active
- C. Count the records which are update
- D. Count the number of records in an active data base files
- E. None

Ans (D) Count the number of records in an active data base files

97. The computer holds data and:

- (A) Bytes
- (B) Programs
- (C) Registers
- (D) Bits
- (E) None

Ans (B) Programs

98. Special set of characters that computer associates with specific user identification is classified as

- A. password
- B. identity code
- C. inquiry code
- D. dump code
- E. None

Ans (A) password

99. Creating a data files means

- A. Designing base and defining the structure of the database
- B. Getting the information about database
- C. Selecting data from database
- D. Deleting data from database
- E. None

Ans (A) Designing base and defining the structure of the database

100. Function of running and loading programs by use of peripherals is function of

- A. operating system
- B. inquiry system
- C. dump programs
- D. function system
- E. None

Ans (A) operating system

101. Each individual data items of record is called a

- A. Data base
- B. Field
- C. Comment
- D. All of these
- E. None

Ans (B) Field

102. Large collections of files are called

- A. Fields
- B. Records
- C. Data Base
- D. File system
- E. None

Ans (C) Database

103. Cache memory is—

- A. Smaller and faster than main storage
- B. Bigger and slower than main storage
- C. Smaller but slower than main memory
- D. Bigger and faster than main memory
- E. None of these

Ans (A) Smaller and faster than main storage

104. Which statement is not valid indexing

- A. It stores the index fields
- B. It stores the corresponding record number
- C. It maintains the alphabetically order
- D. It duplicates the database file
- E. None

Ans (D) It duplicates the database file

105. It run on computer hardware and serve as platform for the others software to run on

- A. Operating system
- B. Application software
- C. System software
- D. All of these
- E. None

Ans (A) Operating system

106. The primary purpose of the operating system is

- A. to allow people to use the computer
- B. to keep system programmers employed
- C. to make the most efficient use of computer hardware
- D. to make computers easier to use
- E. None

Ans (C) to make the most efficient use of computer hardware

107. The time command is used to display

- A. American (US) time
- B. Greenwich mean time
- C. Julian time
- D. System time
- E. None

Ans (D) System time

108. Which command can be used to create the disk track and sectors

- A. FDISK
- B. FORMAT
- C. CHKDSK
- D. ATTRIB
- E. None

Ans (B) FORMAT

109. If you do not know the current time, which command do you use to display

- A. Copy
- B. Very
- C. Time
- D. Format
- E. None

Ans (C) Time

110. To select one hyperlink after another during a slide presentation, what do you press?

- A. Tab
- B. Ctrl + K
- C. Ctrl + h
- D. All of above
- E. None

Ans (A) Tab

111. Which of the following is true about Dial-up internet access?

- (A) It utilizes the existing telephone services
- (B) It uses a router for security
- (C) It utilizes the broadband technology
- (D) Modem speeds are very fast
- (E) All of the above

Ans (A)

112. in the context of animations, what is a trigger?

- A. An action button that advances to the next slide
- B. An item on the slide that performs an action when clicked
- C. The name of a motion path
- D. All of above
- E. None

Ans (B) An item on the slide that performs an action when clicked

113. Which among the following computer provides greater speed than average for performing multi tasking?

- A) Personal Computer
- B) Notebook
- C) Workstation
- D) Tablet PC
- E) None of these

Ans (C)

114. Using Windows Explorer, a plus (+) sign in front of a folder indicates—

- (A) an open folder.
- (B) the folder contains subfolders.
- (C) a text file.

(D) a graphics file  
(E) none of these  
Ans (B)

115. You can create a new presentation by completing all of the following except

- A. Clicking the new button on the standard toolbar
- B. Clicking file, new
- C. Clicking file open
- D. Pressing ctrl + N
- E. None

Ans (C) Clicking file open

116. special effects used to introduce slides in a presentation are called

- A. Animations
- B. custom animations
- C. transitions
- D. present animations
- E. None

Ans (C) transitions

117. How many bits are there in Ex-ASCII and EBCDIC codes respectively

- A. 7, 8
- B. 8, 7
- C. 7, 7
- D. 8, 8
- E. None

Ans (D) 8, 8

118. During the \_\_\_\_\_ operation, the control unit determines what the

program is telling the computer to do.

- (A) fetch
- (B) execute
- (C) decode
- (D) arithmetic
- (E) None of these

Ans (C)

119. All computer execute

- A. basic programs
- B. COBOL programs
- C. Machine language program
- D. FORTRAN program
- E. None

Ans (C) Machine language program

120. Program which is written originally by programmer is classified as

- A. object code
  - B. machine code
  - C. source program
  - D. interactive programs
  - E. None
- Ans (C) source program

121. The laptop was invented by Adam Osborne in .....

- A. 1981
- B. 1984
- C. 1982
- D. 1983
- E. None of these

Ans (A)

Developed by Adam Osborne in April 1981, the Osborne I was the first truly portable computer and is recognized as the first true laptop computer

122. Charles Babbage designed two engine. They are –

- A) Addition and Subtraction Engine
- B) Analytic and Difference Engine
- C) Analytic and Digital engine
- D) Addition and Multiplication Engine
- E) None of these

Ans (B)

1822-Charles Babbage (Difference Engine).

1834-Charles Babbage (Analytical engine).

123. Tabulating machine for census was designed by

- A. Charles Babbage
- B. Alan Turing
- C. Herman Hollerith
- D. Artificial intelligence (AI)
- E. None of these

Ans (C)

1890 - Herman Hollerith (Tabulating Machine).

1911 - Charles Ranlett Flint founded

"Computing-Tabulating-Recording Company (CTR)" and was renamed "International Business Machines" in 1924

1950 - Turing test performed by Alan Turing

124. Which one is not an electronic computing device?

- A) Analytical Engine
- B) Difference Engine
- C) ENIAC
- D) EMCC
- E) None of these

Ans (D)

(1946-1949)-EMCC (Eckert-Mauchly Computer Company) the First computer company.

125. The \_\_\_\_ address uniquely defines a host on the Internet.

- A) physical
- B) Logical
- C) port
- D) specific address
- E) None

Ans (B)

126. In order to edit a chart, you can

- A. Triple click the chart object
- B. Click and drag the chart object
- C. Double click the chart object
- D. Click the chart object
- E. None

Ans (C) Double click the chart object

127. Which of the following device was developed by Jack Kilby & Robert Noyce

- A. Transistor
- B. IC chip
- C. Telegraph
- D. Mouse
- E. None of these

Ans (B)



128. The \_\_\_\_\_ created a model called the Open Systems Interconnection, which allows diverse systems to communicate.

- A. OSI
- B. ISO
- C. IEEE
- D. ANSI
- E. None

Ans (B)

129. The basic unit of a worksheet into which you enter data in Excel is called a

- 1. Tab
- 2. Cell
- 3. Box
- 4. Range
- 5. row

Correct Answer – “2”

130. The \_\_\_\_\_ layer links the network support layers and the user support layers.

- A) transport
- B) network
- C) data link
- D) session
- E) None

Ans (A)

131. The \_\_\_\_\_ layer coordinates the functions required to transmit a bit stream over a physical medium.

- A) transport
- B) network
- C) data link
- D) physical
- E) None

Ans (D)

132. The physical, data link, and network layers are the \_\_\_\_\_ support layers.

- A) user
- B) network
- C) both (a) and (b)
- D) neither (a) nor (b)
- E) None

Ans (B)

132. What is the flow of data between countries commonly called?

- (A) International information system
- (B) EDI
- (C) Outsourcing
- (D) Transborder data flow
- (E) None of these

Ans (D) Transborder data flow

133. What term is used to describe software that monitors your online computer activities?

- (A) Bespoke software
- (B) Spyware
- (C) Custom software
- (D) Travel ware
- (E) None of these

Ans (B) Spyware

134. The two major components of system software are:

- (A) The operating system and system utilities
- (B) Application software and system utilities
- (C) Primary memory and storage
- (D) The operating system and applications software
- (E) None of these

Ans (A) The operating system and system utilities

135. Which of the following may be necessary for you to do after you install new application software?

- (A) Turn the computer power switch off and then back on
- (B) Do a cold boot
- (C) Press Shift + Alt + Del
- (D) Do a warm boot
- (E) None of these

Ans (D) Do a warm boot

136. The power-on self-test-----.

- (A) Checks for upgrades to the application software
- (B) Verifies that the computer hardware is working properly
- (C) Is able to provide easy-to-follow on-screen instructions to correct hardware problems
- (D) Is conducted after the BIOS instructions are placed in memory
- (E) None of these

Ans (B) Verifies that the computer hardware is working properly

137. Which of the following is NOT part of the motherboard?

- (A) System clock
- (B) Connector
- (C) CPU
- (D) Chipset
- (E) None of these

Ans (B) Connector

138. Which of the following is the advantage of Assembly language over Machine language?

- (A) Easy to use
- (B) Easy to understand
- (C) Easy to modify
- (D) All the above
- (E) None of these

Ans (D)

139. An example of a wireless medium that sends data through the air or space is:

- (A) Fiber-optic cable.
- (B) Coaxial cable.
- (C) Twisted pair.
- (D) Microwaves.
- (E) None of these

Ans (D) Microwaves.

140. If a memory chip is volatile, it will.....

- (A) explode if exposed to high temperatures
- (B) lose its contents if current is turned off

- (C) be used for data storage only
- (D) be used to both read and write data

(E) None of these

Ans (B)

141. The session, presentation, and application layers are the \_\_\_\_ support layers.

- A) user
- B) network
- C) both (a) and (b)
- D) neither (a) nor (b)
- E) None

Ans (A)

142. In Excel, this is a prerecorded formula that provides a shortcut for complex calculations.....

- (A) Value
- (B) Data Series
- (C) Function
- (D) Field
- (E) None of these

Ans (C) Function

143. Which of the following is a circuit that issue signals at regular intervals...?

- (A) Circuit board
- (B) Clock
- (C) Circuit card
- (D) Gates
- (E) None of these

Ans (B) Clock

144. The \_\_\_\_\_ layer establishes, maintains, and synchronizes the interactions between communicating devices.

- A) transport
- B) network
- C) session
- D) physical
- E) None

Ans (C)

145. Which of the following animations cannot be done in PowerPoint?

- (A) bullet list, revealed one bullet point at a time
- (B) clip art - Fly in from the bottom
- (C) table, revealed row by row
- (D) chart, revealed by series
- (E) None of these

Ans (C) table, revealed row by row

146. .... is the key we use to run the selected command.

- (A) SHIFT
- (B) TAB
- (C) ENTER
- (D) CTRL
- (E) None of these

Ans (C) ENTER

147. Which one of the following was world's first commercial computer?

- A) ENIAC
- B) EDVAC
- C) EDSAC
- D) UNIVAC
- E) None of these

Ans (D)

148. Which of the following displays the contents of the active cell?

- (A) Active cell
- (B) Formula bar
- (C) Menu bar
- (D) Name box
- (E) None of the above

Ans (B) Formula bar

149. The purpose of the primary key in a database is to :

- (A) unlock the database
- (B) provide a map of the data
- (C) uniquely identify a record
- (D) establish constraints on database operations
- (E) None of these

Ans (C) uniquely identify a record

150. This printer places an image on a page without physically touching the page.

- A. Line printer
- B. Impact printer
- C. Non-impact printer
- D. Dot-matrix printer
- E. None

Ans (C)

151. Which of the following refers to too much electricity and may cause a voltage surge?

- a) Anomaly
- b) Shock
- c) Spike
- d) Virus
- e) None of these

Ans (C)

152. A function inside another function is called a ..... Function.

- (A) Nested
- (B) Round
- (C) Sum
- (D) Text
- (E) None of the above

Ans (A) Nested

153. CPU can directly understand this language

- A. C
- B. C++
- C. Assembly
- D. Java
- E. None of these

Ans (E) None of these

154. World's first microprocessor was

- A. Intel 4000
- B. Intel 4002
- C. Intel 4004
- D. Intel 4008
- E. None of these

Answer: C

155. Selects the entire Row press-----

- (A) Shift + Space
- (B) Shift + ctrl
- (C) Shift + alt
- (D) Space + enter
- (E) None of these

Ans (A) Shift + Space

156. In Assembly language....

- (A) Mnemonics are used to code operations
- (B) Alphanumeric symbols are used for addresses
- (C) Language lies between high-level language and machine language
- (D) All of the above
- (E) None of these

Ans (D) All of the above

157. To insert a word into the middle of a sentence-

- (A) move the cursor to the desired location in the sentence and type the new word
- (B) move the cursor to the desired location in the sentence, press Enter key, and type the new word
- (C) move the cursor to the beginning of the sentence and start typing
- (D) retype the whole sentence
- (E) None of these

Answer: A

move the cursor to the desired location in the sentence and type the new word

1. The overall design, construction, organization and interconnecting of the various components of a computer system is referred as-

- (A) Computer Architecture
- (B) Computer Flowchart
- (C) Computer Algorithm
- (D) All of the above
- (E) None of these

Ans (A) Computer Architecture

158. Languages which can easily interact with the hardware are

- A. High level language
- B. low level language

C. middle level language

D. none of these

E. None

Ans (B) low level language

159. Grouping and processing all of a firm's transactions at one time is called-

- (A) a database management system
- (B) batch processing
- (C) a real-time system
- (D) an on-line system
- (E) None of these

Answer: B

160. A spiral shape track formatting is present in

- (A) Floppy Disk
- (B) Optical Disk
- (C) Hard Disk
- (D) Half-inch Tape Cartridge
- (E) None of these

Answer: B

161. Which of the following groups contains graphical file extensions?

- (A) JPG, DRV, BAK
- (B) GIF, TCP, WMV
- (C) TCP, JPG, BMP
- (D) JPG, GIF, BMP
- (E) None of these

Answer: D

162. The communication between a processor and other devices inside the computer is done through?

- (A) Bus
- (B) Channel
- (C) Network Cable
- (D) Chip
- (E) None of these

Answer: A

163. A storage device or medium where the access time is dependent upon the location of the data is called

- A. Parallel access
- B. Serial access
- C. Both (A) and (B)

D. None of the above

Answer : C

164. \_\_\_\_\_ are attempts by individuals to obtain confidential information from you by falsifying their identity.

- (A) Phishing
- (B) Computer viruses
- (C) Spyware scams
- (D) Viruses
- (E) None of the above

Ans (A) Phishing

165. Which of the following is not true for primary storage?

- (A) It is a part of the CPU
- (B) It allows very fast access of data
- (C) It is relatively more expensive than other storage devices.
- (D) Can be removed and transported.
- (E) All of the above

Answer: A

166. ....processing is used when a large mail-order company accumulates orders and processes them together in one large set.

- (A) Batch
- (B) Online
- (C) Real-time
- (D) Group
- (E) None of these

Ans (A) Batch

167. What is a motion path?

- A. A type of animation entrance effect
- B. A method of advancing slides
- C. A method of moving items on a slide
- D. All of the above
- E. None

Ans (C) A method of moving items on a slide

168. Which of the following memories can be read directly by the computer processor?

- (A) Hard Disk
- (B) Main Memory

(C) CD

(D) DVD

(E) None of these

Answer: B

169. Who is/are the founders of Microsoft?

- (A) Bill Gates
- (B) Bill Gates and Allen Paul
- (C) Steve Jobs
- (D) Bill Gates and Steve Jobs
- (E) None of these

Answer: B

170. Technique of using fixed words for machine code functions is classified as

- A. mnemonics
- B. nemonics
- C. compiler
- D. Translator
- E. None

Ans (A) mnemonics

171. \_\_\_\_\_ is a form of denial of service attack in which a hostile client repeatedly sends SYN packets to every port on the server using fake IP addresses.

- a) Cyberspace crime
- b) Memory shaving
- c) Syn flooding
- d) Email Flooding
- e) None of these

Ans (A)

172. What is the difference between a check box and Radio button?

- a) No difference
- b) In radio buttons multiple options can be selected whereas in check boxes only single option can be selected
- c) In check boxes as well as radio buttons multiple options can be selected, but radio buttons can be used only twice
- d) In check boxes multiple options can be selected whereas in radio buttons only single option can be selected
- e) None of these



Answer: D

173. Which is the first electro-mechanical binary programmable computer?

- A) Z1
- B) Intel 8084
- C) IBM 007
- D) Intel 8000
- E) None of these

Ans (A)

(1936-1938)-Konrad Zuse, Computer (Z1).

174. Which is NOT a function of a microprocessor?

- (A) Controls the rest of the computer's components
- (B) Keeps the system unit cool
- (C) Processes data
- (D) Interprets instructions given by software
- (E) None of these

Answer: B

175. \_\_\_\_\_ has a large storage capacity, up to 17 GB if both layers and both sides are used.

- (A) DVD-ROM
- (B) CD-ROM
- (C) Floppy
- (D) RAM
- (E) None of these

Answer: A

176. A \_\_\_\_\_ card connects each computer to the wiring in the network.

- (A) network interface
- (B) PC interface
- (C) Memory
- (D) All of the above
- (E) None of these

Answer: A

177. To execute a given DOS program, you must type a(n) \_\_\_\_\_.

- (A) command

- (B) order
- (C) syntax
- (D) all of the above
- (E) none of these

Answer: A

178. You can add a hyperlink to your worksheet by pressing

- (A) Alt + K
- (B) Ctrl + H
- (C) Ctrl + K
- (D) Ctrl + Shift + K
- (E) None of the above

Ans (C) Ctrl + K

179. The \_\_\_\_\_ layer enables the users to access the network.

- A) transport
- B) application
- C) data link
- D) Physical
- E) None

Answer: B

180. When you insert an Excel file into a Word document, the data are

- (A) Hyperlinked
- (B) Placed in a word table
- (C) Linked
- (D) Embedded
- (E) None of the above

Ans (B) Placed in a word table

181. The TCP/IP \_\_\_\_\_ layer is equivalent to the combined session, presentation, and application layers of the OSI model.

- A) application
- B) network
- C) data link
- D) Physical
- E) None

Answer: A

182. Communication between a computer and a keyboard involves \_\_\_\_\_ transmission.

- A) simplex
- B) half-duplex
- C) full-duplex



- D) Automatic
- E) None

Answer: A

183. When data changes in multiple lists and all lists are not updated, this causes?

- (A) data redundancy
- (B) information overload
- (C) duplicate data
- (D) data inconsistency
- (E) None of these

Ans (D) data inconsistency

184. The \_\_\_\_\_ is the physical path over which a message travels.

- A) Protocol
- B) Medium
- C) Signal
- D) All the above
- E) None

Answer: B

185. The technique where digital signals are converted to its analog form for transmission over an analog facility is called—

- (A) Modulation
- (B) Digitization
- (C) Demodulation
- (D) All of the above
- (E) None of these

Ans (A) Modulation

186. In a \_\_\_\_\_ connection, more than two devices can share a single link.

- A) point-to-point
- B) multipoint
- C) primary
- D) secondary
- E) None

Answer: B

187. Which topology requires a multipoint connection?

- A) Mesh
- B) Star
- C) Bus

- D) Ring
- E) None

Answer: C

188. A \_\_\_\_\_ connection provides a dedicated link between two devices.

- A) point-to-point
- B) multipoint
- C) primary
- D) secondary
- E) None

Answer: A

189. In \_\_\_\_\_ transmission, the channel capacity is shared by both communicating devices at all times.

- A) simplex
- B) half-duplex
- C) full-duplex
- D) half-simple
- E) None

Answer: C

190. Which of the following protocol is used for transferring electronic mail message from one machine to another?

- A) SNMP
- B) SLIP
- C) POP
- D) SMTP
- E) None

Answer: D

191. Internet-like networks within an enterprise known as- ?

- A) Extranet
- B) Internet
- C) Intranet
- D) PAN
- E) None

Answer: C

192. A.....is a collection of data that is stored electronically as a series of records in a table.

- (A) spreadsheet
- (B) presentation
- (C) Database
- (D) web page

(E) None of these

Ans (C) Database

193. What happens if you press Ctrl + Shift + F8?

(A) It activates extended selection

(B) It activates the rectangular selection

(C) It selects the paragraph on which the insertion line is.

(D) None of above

(E) All the above

Ans (B) It activates the rectangular selection

194. What is the correct syntax for typing a function into a cell?

(A) Equal sign, Function Name, Matching brackets

(B) Function Name, Equal sign, Matching brackets

(C) Equal sign, Matching brackets, Function Name

(D) None of the above

(E) None of these

Ans (A) Equal sign, Function Name, Matching brackets

195. If you see a small red triangle in the top right corner of a cell, it means there is something attached to the cell. What is it?

(A) A comment

(B) An attachment

(C) An error

(D) None of the above

(E) None of these

Ans (A) A comment

196. Which of the following keyboard shortcuts is used to view the properties of a selected object?

(A) Alt + Space

(B) Ctrl + Space

(C) Alt + Enter

(D) Ctrl + Enter

(E) None of these

Ans (C) Alt + Enter

197. A television broadcast is an example of \_\_\_\_\_ transmission.

A) simplex

B) half-duplex

C) full-duplex

D) Automatic

E) None

Answer: A

198. The..... Settings are automatic and standard.

(A) Default

(B) CPU

(C) Peripheral

(D) User-friendly

(E) None of these

Ans (A) Default

199. Pop-ups are a form of \_\_\_\_\_ on the World Wide Web?

(A) Instant Messaging

(B) Search Engines

(C) Browsers

(D) Mark-up Languages

(E) Online Advertising

Ans (E) Online Advertising

200. Which of the following displays the Absolute contents of the active cell?

(A) Active cell

(B) Formula bar

(C) Menu bar

(D) Name box

(E) None of the above

Ans (B) Formula bar

201. What is the keyboard shortcut for creating a chart from the selected cells?

(A) F3

(B) F5

(C) F7

(D) F11

(E) None of the above

Ans (D) F11

202. The \_\_\_\_\_ layer is responsible for the source-to-destination delivery of a packet across multiple network links.

- A) transport
- B) network
- C) data link
- D) Physical
- E) None

Answer: B

203. Which of the following process is used by the computer to ensure that all the devices connect to it is in working condition?

- A) Verifying
- B) Hibernating
- C) Starting
- D) Booting

Answer: D

204. Technique of using disk space to make programs believe that the system contains more Random Access Memory(RAM) than is actually available is called \_\_\_\_\_

- A. Random Access Memory
- B. Primary Memory
- C. Secondary Memory
- D. Virtual Memory

Answer : D

205. A \_\_\_\_\_ device receives the results from the CPU and provides them to the liveware.

- A) Input
- B) Output
- C) Memory
- D) Processing

Answer: B

206. EAROM stands for \_\_\_\_\_

- A. Electrically Altered Read Only Memory
- B. Electrically Accepted Read Only Memory
- C. Electronically Alterable Read Only Memory
- D. Electrically Alterable Read Only

Memory

Answer : D

207. Which of the following program is the closest to the machine code?

- A. Compiler
- B. Interpreter
- C. Assembler
- D. None of the above

Answer : C

208. Which of the following is/are example(s) of Word Processors?

- A. Microsoft Word
- B. WordPerfect
- C. Both (A) and (B)
- D. None of the above

Answer : C

209. Which of the following is/are example(s) of Spreadsheets?

- A. Microsoft Excel
- B. Lotus 1-2-3
- C. Both (A) and (B)
- D. None of the above

Answer : C

210. \_\_\_\_\_ is the software which comes with the permission for people to redistribute copies for a limited period.

- A. Freeware
- B. Shareware
- C. Open Source Software
- D. Public Domain Software

Answer : B

211. The \_\_\_\_\_ digits are 0 to 9 and A to F.

- A) Decimal
- B) Hexadecimal
- C) Binomial
- D) Trinomial

Answer: B

212. What does EULA stand for?

- A. Exit User License Agreement
- B. Exit Utility License Agreement
- C. End Utility License Agreement
- D. End User License Agreement

Answer : D

213. Which of the following media device cannot perform both the operation of reading and writing?

- A) Hard Disk
- B) Pen Drive
- C) CD-ROM
- D) Floppy Disk
- E) None of these

Answer: C

214. Which of the following software is also called as Closed Source Software?

- A. FreeBSD
- B. Proprietary Software
- C. Mandriva
- D. Firefox

Answer : B

215. Physical addressing is performed by which layer of OSI model?

- A) Layer 3
- B) Layer 4
- C) Layer 2
- D) Layer 7
- E) None of these

Answer : C

216. What is the process of dividing a network into two or more networks called?

- A) divider
- B) subnetting
- C) ethernet
- D) LAN

Answer : B

217. \_\_\_\_\_ is a collection of one or more files that correct flaws in the performance, reliability or security of a specific software product.

- A. Software Update
- B. Software Piracy
- C. Software patch
- D. None of the above

Answer : C

218. Internal hard disk is a \_\_\_\_\_

memory and pen drive is a \_\_\_\_\_ memory.

- A) Online, Online
- B) Offline, offline
- C) Offline, Online
- D) Online, Offline

Answer: D

219. The \_\_\_\_\_ enables you to simultaneously keep multiple Web pages open in one browser window.

- A) tab box
- B) pop-up helper
- C) tab row
- D) address bar

Answer: C

220. Who developed the concept of email?

- A) Bill Gates
- B) Blaise Pascal
- C) Sabir Bhatia
- D) Ray Tomlinson

Answer: D

221. The will be the output when AND operator is applied on inputs 1 and 0 (i.e 1 AND 0)?

- A) 1
- B) 0
- C) Can be either 0 or 1
- D) None of these

Answer: B

222.  $2^{30}$  bytes represents

- A) 1 megabyte
- B) 1 gigabyte
- C) 1 terabyte
- D) 1 petabyte

Answer: B

$2^{10}$  byte = KB

$2^{20}$  byte = MB

$2^{30}$  byte = GB

223. Which of the following operation is not performed by ALU?

- A) Division
- B) Logical AND
- C) Complement
- D) Exponential

Answer: D

224. A \_\_\_\_\_ is a hardware frame and set of electrical connection interfaces that enable a notebook computer to effectively serve as a desktop computer

- A) Network Interface Card
- B) Topology
- C) Docking station
- D) Virtual Storage Unit

Answer: C

225. \_\_\_\_\_ is a program that searches for and identifies items in a database that correspond to keywords, used especially for finding particular sites on the World Wide Web.

- A) Widgets
- B) Search Engine
- C) Social Media
- D) Malware

Answer: B

226. Floating Point in computer refers to \_\_\_\_\_ ?

- A) Invalid Hardware type
- B) Unsupported Software
- C) Decimal Numbers
- D) Virus

Answer: C

227. What does M stands for in CAM?

- A) magnetic
- B) manufacturing
- C) multiple
- D) management

Answer: B

228. In computer \_\_\_\_\_ is a process by which two devices initiate communications.

- A) Protocol
- B) Handshaking
- C) Topology
- D) Networking

Answer: B

229. Which of the following is application software?

- A. Database Management System
- B. Spreadsheets
- C. Image Editor
- D. All of the above

Answer : D

230. What is a bug bounty?

- A) A type of virus
- B) Reward for finding a bug and reporting it to any organization
- C) Genuine Software
- D) Reward for hacking a government website

Answer: B

231. Find the odd one out

- A) MeeGo OS
- B) Android
- C) Windows 10
- D) Symbian OS

Answer: C

232. \_\_\_\_\_ is an organization that provides services for accessing and using the Internet.

- A) Domain
- B) Hosting
- C) Website
- D) ISP

Answer: D

Internet Service Provider

233. Which of the following is used to stores programs and files that are to be used later?

- A) Mother Board
- B) RAM
- C) Hard Disk
- D) Cache
- E) None of these

Answer: C

234. Which of the following is not a processor architecture?

- A) RISC
- B) EPIC
- C) CISC
- D) DISC

Answer: D

235. Which of the following is mandatory for every disk?

- A. root
- B. sub
- C. bare
- D. None of the above

Answer : A

236. A \_\_\_\_\_ is a special program that processes statements written in a particular programming language and turns them into machine language.

- A. Compiler
- B. Device Driver
- C. Assembler
- D. None of the above

Answer : A

237. Who among the following is called the father of 'PASCAL' programming language?

- A) Bjarne Stroustrup
- B) Dennis Ritchie
- C) Blaise pascal
- D) James Gosling
- E) None of these

Answer : E

238. Segmentation and reassembly are performed by which layer of OSI model?

- A) Layer 3
- B) Layer 4
- C) Layer 2
- D) Layer 7
- E) None of these

Answer : B

239. Small Scale Integration(SSI) is related to which generation of computer?

- A) Second Generation
- B) Third Generation
- C) Fourth Generation
- D) First Generation

Answer : B

240. Heat Sink is used to \_\_\_\_\_ ?

- A) Provide warm up power to processor
- B) Provide startup power to Operating System
- C) Provide cooling to processor
- D) None of these

Answer : C

Provide cooling to processor

241. The code written by user is called \_\_\_\_\_ code and the code after execution is known as \_\_\_\_\_ code.

- A) Object, Source
- B) Viewer, Object
- C) Source, Object
- D) Viewer, Source

Answer : C

242. Which of the following is the loopback address?

- A. 128.168.1.1
- B. 255.255.255.255
- C. 127.0.0.1
- D. 192.255.254.253
- E. None

Correct Answer: "C"

243. A byte can represent any number between 0 and \_\_\_\_\_ .

- A) 8
- B) 255
- C) 256
- D) 1024
- E) None of these

Correct Answer: "B"



244. The type of software that controls the internal operations in the computer, and control how the computer works with all its parts, is which of the following

- (A) Shareware
- (B) Operating System
- (C) Application software
- (D) Public domain software
- (E) None of these

Correct Answer: "B"

245. The database schema is written in

- a) HLL
- b) DML
- c) DDL
- d) DCL
- e) None of these

Correct Answer: "C"

246. Architecture of the database can be viewed as

- A. Two levels.
- B. Four levels.
- C. Three levels.
- D. One level.
- E. None of these

Correct Answer: "C"

247. Key to represent relationship between tables is called .....

- a) Primary key
- b) Secondary Key
- c) Foreign Key
- d) Both A and C
- e) None of these

Correct Answer: "C"

248. Which symbol is used in Excel to denote exponential numbers?

- (1) \*
- (2) ^
- (3) &
- (4) \$
- (5) None of these

Correct Answer: "2"

249. In case of entity integrity, the primary key should be

- a) not Null
- b) Null
- c) both Null & not Null.
- d) any value.
- e) None of these

Correct Answer: "a"

250. The language used in application programs to request data from the DBMS is referred to as the .....

- a) DML
- b) DDL
- c) VDL
- d) SDL
- e) None of these

Correct Answer: "a"

251. In an E-R diagram attributes are represented by

- a) Rectangle.
- b) Square.
- c) Ellipse.
- d) Triangle.
- e) None of these

Correct Answer: "c"

252. Related fields in a database are grouped to form a

- a) data file.
- b) data record.
- c) menu.
- d) bank.
- e) None of these

Correct Answer: "b"

253. .... is mainly responsible for allocating the resources as per process requirement?

- (A) RAM
- (B) Compiler
- (C) Hardware
- (D) Software
- (E) None of these

Correct Answer: "E"

254. Which of the following is not an example of OS?

- (A) Windows XP
- (B) Mac OS
- (C) DOS
- (D) LYNX
- (E) All are the examples of OS

Correct Answer: "2"

255. A primary key if combined with a foreign key creates

- a) Parent-Child relationship between the tables that connect them
- b) Many to many relationship between the tables that connect them
- c) Network model between the tables that connect them.
- d) None of the above.

Correct Answer: "a"

256. The type of software that controls the internal operations in the computer, and control how the computer works with all its parts, is which of the following

- (A) Shareware
- (B) Operating System
- (C) Application software
- (D) Public domain software
- (E) None of these

Correct Answer: "B"

257. The database schema is written in

- a) HLL
- b) DML
- c) DDL
- d) DCL
- e) None of these

Correct Answer: ""c"

258. Architecture of the database can be viewed as

- A. Two levels.
- B. Four levels.
- C. Three levels.
- D. One level.
- E. None of these

Correct Answer: "C"

259. Key to represent relationship between tables is called .....

- a) Primary key
- b) Secondary Key
- c) Foreign Key
- d) Both A and C
- e) None of these

Correct Answer: "c"

260. Which symbol is used in Excel to denote exponential numbers?

- (1) \*
- (2) ^
- (3) &
- (4) \$
- (5) None of these

Correct Answer: "2"

261. In case of entity integrity, the primary key should be

- a) not Null
- b) Null
- c) both Null & not Null.
- d) any value.
- e) None of these

Correct Answer: "a"

262. The language used in application programs to request data from the DBMS is referred to as the .....

- a) DML
- b) DDL
- c) VDL
- d) SDL
- e) None of these

Correct Answer: "a"

263. In an E-R diagram attributes are represented by

- a) Rectangle.
- b) Square.
- c) Ellipse.
- d) Triangle.
- e) None of these

Correct Answer: "c"

264. Related fields in a database are grouped to form a

- a) data file.
- b) data record.

- c) menu.
  - d) bank.
  - e) None of these
- Correct Answer: "c"

265 ..... is mainly responsible for allocating the resources as per process requirement?

- (A) RAM
  - (B) Compiler
  - (C) Hardware
  - (D) Software
  - (E) None of these
- Correct Answer: "E"

266. Which of the following is not an example of OS?

- (A) Windows XP
  - (B) Mac OS
  - (C) DoS
  - (D) LINUX
  - (E) All are the examples of OS
- Correct Answer: "C"

267. Which of the following statements is wrong?

- a) Windows XP is an operating system
  - b) Linux is owned and sold by Microsoft
  - c) Photoshop is a graphical design tool by adobe
  - d) Linux is free and open source software
  - e) None of the above
- Correct Answer: "b"

268. What does the XP stand for in Windows XP?

- (1) Exponential
  - (2) Experience
  - (3) Expertise
  - (4) Exchange
  - (5) None of these
- Correct Answer: "2"

269. Which of the following is an example for Character printer?

- A. Laser
- B. Drum
- C. Chain

- D. Daisy Wheel
  - E. None
- Correct Answer: "D"

270. Multitasking seems in a system due to -

- a) Time-stamping
  - b) Time-sharing
  - c) Time-responding
  - d) All
  - e) None of the above
- Correct Answer: "b"

271. Which of the following is not application software?

- a) Windows New Technology
  - b) Page maker
  - c) Winword
  - d) Powerpoint
  - e) None of the above
- Correct Answer: "a"

272. What is the full form of a FRU?

- a) Filled Replaceable Unit
  - b) Field Replaceable Unit
  - c) Full Replaceable Unit
  - d) Frequent Replaceable Unit
  - e) None of these
- Correct Answer: "b"

273. Which of the following is suitable to implement client server network?

- a) MS-DOS
  - b) Win 95
  - c) Win 98
  - d) Win 2000
  - e) None of the above
- Correct Answer: "d"

274. My Computer was introduced from

- a) Windows 95
  - b) Windows 3.11
  - c) Windows 2.0
  - d) Windows 98
  - e) None
- Correct Answer: "a"

275. Which of the following operating system was initially created at AT&T bell labs in 1970-71?

- (A) DOS
- (B) LINUX
- (C) UNIX
- (D) Mac
- (E) None of these

Correct Answer: "C"

276. What is a process in OS?

- (A) Procedure
- (B) Step by step sequence
- (C) Program in execution
- (D) Data processing
- (E) None of these

Correct Answer: "C"

276. In which of the concept of OS the CPU never sits idle?

- (A) Multi-tasking
- (B) Multi-Programming
- (C) Batch processing
- (D) In all of above
- (E) None of these

Correct Answer: "B"

277. When sending an e-mail, the \_\_\_\_\_ line describes the contents of the message.

- (1) to
- (2) subject
- (3) contents
- (4) CC
- (5) None of these

Correct Answer: "2"

278. .... is the set of computer instructions or programs that enables the hardware to performs different tasks.

- (A) Information
- (B) Hardware
- (C) Software
- (D) Application
- (E) None of these

Correct Answer: "C"

279. Special I/O devices such as, Joy stick, Data Glove are involved in \_\_\_\_\_ applications.

- A. Mechanics
- B. Haptics
- C. Optical

D. None of the Above

Correct Answer: "B"

280. Instructions and data that are processed by the CPU are located in \_\_\_\_\_

- (1) CD-ROM
- (2) RAM
- (3) the hard disk
- (4) the motherboard
- (5) none of these

Correct Answer: "2"

281. ODBC stands for

- a) Object Database Connectivity.
- b) Oral Database Connectivity.
- c) Oracle Database Connectivity.
- d) Open Database Connectivity.
- e) None of these

Correct Answer: "d"

282. .... is used to minimize response time.

- (A) Multi-Programming
- (B) Multi-Tasking
- (C) Batch system
- (D) All
- (E) None of these

Correct Answer: "B"

283. A scanner that is moved by hand over the material being captured is known as \_\_\_\_\_

- A. Sheetfed scanner
- B. Flatbed scanner
- C. Drum scanner
- D. Handheld scanner

Correct Answer: "D"

284. Which of the following is firmware device?

- (A) RAM
- (B) ROM
- (C) HDD
- (D) FDD
- (E) None of these

Correct Answer: "B"

285. You can use the \_\_\_\_\_ bar to type URL and display a Web page, or type a keyword to display a list of related Web pages.

- a) Menu
- b) Title
- c) Search
- d) Standard bar
- e) None

Correct Answer: "e"

286. Which part interprets program instructions and initiate control operations?

- a) Input
- b) Storage unit
- c) Logic unit
- d) Control unit
- e) None of the above

Correct Answer: "d"

287. How do you display current date and time in MS Excel?

- a) date ()
- b) Today ()
- c) Datetime ()
- d) time ()
- e) None of these

Correct Answer: "e"

288. In a Hierarchical model records are organized as

- a) Graph.
- b) List.
- c) Links.
- d) Tree.
- e) None of these

Correct Answer: "d"

289. An entity set that does not have sufficient attributes to form a primary key is a.....

- a) Strong entity set.
- b) Weak entity set.
- c) Simple entity set.
- d) Primary entity set.
- e) None of these

Correct Answer: "b"

290. What is used in most programs that is a part of a program and guides the user through certain steps?

- a) Software
- b) Word
- c) Wiki
- d) Wizard
- e) None of the above

Correct Answer: "d"

291. Panther, Jaguar, Puma, and Cheetah are examples of what kind of operating system?

- a) Windows OS
- b) Mac OS
- c) Linux Operating Systems
- d) Android Operating Systems
- e) None of these

Correct Answer: "b"

292. As a person working in internet banking environment, why you should be aware of the "Dictionary attack"?

- a) It is used to inject worms or viruses in the system
- b) It is used to determine a password
- c) It is used to access customer's account by determining other details
- d) It is used for stealing info from the Credit Card
- e) None of these

Correct Answer: "b"

293. Most of the internet banking sites provide which of the following feature to reduce the risk of keystroke logging for the password entry?

- a) Virtual keyboard
- b) Finger Touching
- c) Touch screen
- d) Shape Writer
- e) None of these

Correct Answer: "a"

294. Modern computers follow a generalized set of instructions to perform any function. What are these instructions better known as?

- a) Language
- b) Instructions



- c) Commands
  - d) Programs
  - e) None of these
- Correct Answer: "d"

295. Which of the following devices is used for video games, flight simulators, training simulators and for controlling industrial robots?

- a) Mouse
- b) Light pen
- c) Joystick
- d) Keyboards
- e) None of these

Correct Answer: "c"

296. What is the term used for verification of a login name and password in computer terminology?

- a) Configuration
- b) Accessibility
- c) Authentication
- d) Logging
- e) None of these

Correct Answer: "c"

297. In the relational models, cardinality is termed as:

- a) Number of tuples.
- b) Number of attributes.
- c) Number of tables.
- d) Number of constraints.
- e) None of these

Correct Answer: "a"

298. What menu is selected to cut, copy and paste?

- (1) File
- (2) Tools
- (3) Special
- (4) Edit
- (5) None of these

Correct Answer: "4"

299. In a relational model, relations are termed as

- a) Tuples.
- b) Attributes
- c) Tables.
- d) Rows.

- e) None of these
- Correct Answer: "c"

300. \_\_\_\_\_ is the file system used by the operating system to identify the physical locations of files on the hard drive.

- (1) RTOS
- (2) GIF
- (3) FAT
- (4) POST
- (5) None of these

Correct Answer: "3"

301. Which input device cannot be used to work in MS Office?

- (1) Scanner
- (2) Mouse
- (3) Keyboard
- (4) Joy stick
- (5) Light pen

Correct Answer: "4"

302. .... is a collection of web - pages and ..... is the very first page that we see on opening of a website.

- (1) Home page, Web page
- (2) Website, Home page
- (3) Web page, Home page
- (4) Web page, Website
- (5) None of these

Correct Answer: "2"

303. Which input device is used to read information on a credit card?

- A. Graphic Tablet
- B. Numeric Keyboard
- C. Bar Code reader
- D. Magnetic Stripe reader
- E. None

Correct Answer: "D"

304. In OCR processing, when a character is recognized, it is converted into \_\_\_\_\_ code.

- A. binary
- B. ASCII
- C. EBCDIC
- D. Both (A) and (B)



E. None of the Above

Correct Answer: "B"

305. Which input device is used for inserting pin numbers for credit cards?

- A. Graphic Tablet
- B. Numeric pad
- C. Bar Code reader
- D. Magnetic Stripe reader
- E. None

Correct Answer: "B"

306. \_\_\_\_\_ printers are the printers that print one page at a time.

- A. Thermal
- B. Drum
- C. Chain
- D. Dot Matrix
- E. None

Correct Answer: "E"

307. \_\_\_\_\_ is a protocol designed for recording and playing back music on digital synthesizers.

- A. Musical Interface
- B. Graphical User Interface (GUI)
- C. MIDI
- D. MIME
- E. None of the Above

Correct Answer: "C"

308. Which is an interactive device that facilitates touch sensation and fine-motion control in Robotics and Virtual reality?

- A. Light Pen
- B. Joystick
- C. Data Glove
- D. None of the Above

Correct Answer: "C"

309. Which device typically attachable to computer keyboard that allows a blind people to read?

- A. Light Pen
- B. Joystick
- C. Touch screen
- D. Braille display
- E. None

Correct Answer: "D"

310. Which is an escape code language used to send commands to the printer for printing documents?

- A. Postscript
- B. PCL (Printer Command Language)
- C. Both (A) and (B)
- D. None of the Above

Correct Answer: "B"

311. \_\_\_\_\_ is a device which recognizes physical or behavioral traits of the individual.

- A. Smart Card Reader
- B. Optical Character Reader(OCR)
- C. Optical Mark Reader(OCR)
- D. Biometric Sensor
- E. All of the above

Correct Answer: "D"

312. \_\_\_\_\_ is a device that performs a variety of functions that would otherwise be carried out by separate peripheral devices.

- A. Single Function Peripheral
- B. Multi Function Peripheral
- C. Dual Function Peripheral
- D. None of the Above
- E. All of the above

Correct Answer: "B"

313. What is the ultimate purpose of Defragmentation?

- (1) Make the PC faster
- (2) Create More Free Space
- (3) Delete temporary files
- (4) Reduce Power consumption
- (5) none of these

Correct Answer: "2"

314. The term \_\_\_\_\_ refers to data storage systems that make it possible for a computer or electronic device to store and retrieve data.

- A. input technology
- B. output technology
- C. storage technology
- D. None of the Above

Correct Answer: "C"

315. What's considered the 'backbone' of the World Wide Web?

- (1) URL
- (2) HTML
- (3) HTTP
- (4) FTP
- (5) None of these

Correct Answer: "3"

316. Small application programs that run on a Web page and provide animation are known as \_\_\_\_\_

- (1) flash
- (2) spiders
- (3) cookies
- (4) applets
- (5) none of these

Correct Answer: "1"

317. What is the codename given to Edge web browser?

- a) Spartan
- b) Opera
- c) Google
- d) Orange
- e) Cortana

Correct Answer: "a"

318. A Proxy server is used for which of the following?

- (A) To provide security against unauthorized users
- (B) To process client requests for web pages
- (C) To provide TCP/IP
- (D) To process client requests for database access
- (E) None of these

Correct Answer: "B"

319. The operating system that is self-contained in a device and resident in the ROM is \_\_\_\_\_

- (1) Batch Operating System
- (2) Real - time Operating System
- (3) Embedded Operating System
- (4) Multi Operating System
- (5) None of these

Correct Answer: "3"

320. What is the correct way to refer the cell A10 on sheet3 from sheet1?

- A. sheet3!A10
- B. sheet1!A10
- C. Sheet3.A10
- D. A10
- E. None of these

Correct Answer: "A"

321. Which language is used to create macros in Excel?

- A. Visual Basic
- B. C
- C. Visual C++
- D. Java
- E. None of these

Correct Answer: "A"

322. In MS-Excel worksheet which formula should be entered in A3 so that a number 20% smaller than the number in A1 should display in A3?

- (A) =A1\*1.20
- (B) =A1\*0.80
- (C) =A1%20
- (D) =A1\*110

Correct Answer: "B"

323. The process of rewriting parts of a file in contiguous sectors on a hard disk to increase the speed of access and retrieval is known as:

- (A) Format
- (B) Defragmentation
- (C) File Allocation Table (FAT)
- (D) Configuration

Correct Answer: "B"

324. in MS WORD what is gutter margin?

- a. margin that is added to the left margin when printing.
- b. margin that is added to right margin when printing.
- c. margin that is added to blindside binding side of page when printing.
- d. margin that is added to outside of the page when printing

Correct Answer: "c"

325. Which of the following formulas will Excel Not be able to calculate?

- A. =SUM(Sales)-A3
- B. =SUM(A1:A5)\*.5
- C. =SUM(A1:A5)/(10-10)
- D. =SUM(A1:A5)-10
- E. None of these

Correct Answer: "A"

326. A typical worksheet has ....  
Number of columns for new versions.

- A. 128
- B. 256
- C. 512
- D. 1024
- E. None of these

Correct Answer: "E"

327. How many characters can be typed in a single cell in Excel?

- A. 256
- B. 1024
- C. 32,000
- D. 32,767
- E. None of these

Correct Answer: "D"

328. What happens when we try to delete the files on the floppy?

- (1) The files get moved to the Recycle Bin
- (2) Files on a floppy cannot be deleted
- (3) The files get deleted and can be restored again from Recycle Bin
- (4) The files get deleted and cannot be restored again
- (5) The file gets copied on the Hard disk

Correct Answer: "4"

329. In Word you can force a page break—

- (1) By positioning your cursor at the appropriate place and pressing the F1 key
- (2) By positioning your cursor at the appropriate place and pressing Ctrl +Enter
- (3) By using the Insert/Section Break

(4) By changing the font size of your document

(5) None of these

Correct Answer: "2"

330: (6702)<sub>8</sub>=(?)<sub>2</sub>

- (1) (101011010111)<sub>2</sub>
- (2) (101001010110)<sub>2</sub>
- (3) (110111000010)<sub>2</sub>
- (4) (110102101011)<sub>2</sub>
- (5) None of these

Correct Answer: "3"

331. Which of the following IP address is belong to C network?

- (a) 127.0.0.1
- (b) 192.120.10.90
- (c) 228.192.255.10
- (d) 0.0.0.0
- (e) None of these

Correct Answer: "b"

332. Which of the following are different SDLC Models?

- a) Waterfall Model
- b) Iterative Model
- c) Big Bang Model
- d) All of the Above
- e) None of these

Correct Answer: "d"

333. Retail employees typically use \_\_\_\_\_ terminals to process

sales

transactions.

- (A) sales processing
- (B) transaction point
- (C) automatic teller
- (D) point of sale
- (E) None of these

Correct Answer: "D"

334. The simultaneous processing of two or more programs by multiple processors is \_\_\_\_\_

- (A) multiprogramming
- (B) multitasking
- (C) time-sharing
- (D) multiprocessing
- (E) None of these

Correct Answer: "D"

335. Which of these protocols is used to login into a remote computer?

- a) Telnet
- b) IMAP
- c) HTTP
- d) SMTP
- e) None of these

Correct Answer: "a"

336. Which of the following extends data across networks rather than store it in one central site?

- (A) PIM
- (B) File manager
- (C) Distributed database
- (D) Data mining program
- (E) None of these

Correct Answer: "C"

337. Which of the following is saved to noncontiguous clusters on a hard disk?

- (A) Clustered file
- (B) Defragmented file
- (C) Sectored file
- (D) Fragmented file
- (E) None of these

Correct Answer: "D"

338. Zip is a -----file.

- (A) Executable File
- (B) Compressed File
- (C) System File
- (D) Combo
- (E) None of these

Correct Answer: "B"

339. Which of these web browsers has the largest market share presently, across all platforms?

- a) Edge
- b) Chrome
- c) Safari
- d) Firefox
- e) WWW

Correct Answer: "b"

340. Which of the following memories uses a MOS capacitor as its memory cell?

- A. SRAM
- B. DRAM
- C. ROM
- D. FIFO
- E. LIFO

Correct Answer: "B"

341. All of the following are considered to be storage devices EXCEPT \_\_\_\_\_

- (A) floppy disk
- (B) CPU
- (C) CD
- (D) hard disk drive
- (E) none of these

Correct Answer: "B"

342. What is the full form of DHCP?

- a) Destined Host Configuration Protocol
- b) Data Hosting Central Protocol
- c) Dynamic Housing Central Protocol
- d) Dynamic Host Configuration Protocol
- e) None of these

Correct Answer: "d"

343. A computer checks the \_\_\_\_\_ of user names and passwords for a match before granting access.

- (A) Website
- (B) Network
- (C) Backup file
- (D) Data base
- (E) None of these

Correct Answer: "D"

344. What is the term for unsolicited e-mail?

- (A) News group
- (B) Use net
- (C) Backbone
- (D) Flaming
- (E) Spam

Correct Answer: "E"

345. What is the full form of HVD?

- a) Hydraulic Video Disk
- b) Halogenated Versatile Disk
- c) Holographic Versatile Disc
- d) Hyper Video Disk

e) None of these

Correct Answer: "b"

346. The \_\_\_\_ records the name and exact location of every file on a disk.

- (1) partition master
- (2) file allocation table
- (3) disk controller
- (4) boot sector
- (5) None of these

Correct Answer: "2"

347. What should be used if a company wants to include its company name and logo at the bottom of every page of a brochure?

- (A) Header
- (B) Macro
- (C) Footer
- (D) Footnote
- (E) None of these

Correct Answer: "C"

348. Who is known as the father of the electronic spreadsheet?

- a) Cullinane
- b) Alsop
- c) Dan Bricklin
- d) Richard Rabins
- e) None of these

Correct Answer: "c"

349. Which of the following terms is used for a software that is built from an existing program?

- a) Brownfield
- b) Greenfield
- c) Pre-existing
- d) All of the above
- e) None of the Above

Correct Answer: "a"

350. At a time how many operating system can be at work on a computer ?

- (1) Only one
- (2) Two
- (3) Three
- (4) Four
- (5) None of these

Correct Answer: "1"

351. Which of the following is used for close a tab on a browser?

- (1) Ctrl + T
- (2) Ctrl + W
- (3) Ctrl + A
- (4) Ctrl + Y
- (5) None of these

Correct Answer: "2"

352. A \_\_\_\_\_ contains specific rules and words that express the logical steps of an algorithm?

- (1) syntax
- (2) programming structure
- (3) programming language
- (4) logic chart
- (5) None of these

Correct Answer: "1"

353. What is the name given to the specialized application that is build for a specific business?

- a) Vertical Application
- b) Horizontal Application
- c) System Software
- d) Both a and b
- e) None of the Above

Correct Answer: "a"

354. What does the SCCM stands for?

- a) Software Center Configuration Manager
- b) Software Configuration Checking Manager
- c) System Center Configuration Manager
- d) Specific Center For Checking and Management
- e) None of the Above

Correct Answer: "c"

355. Which of the following languages was first conceived by Alain Colmerauer?

- a) FORTRAN
- b) Prolog
- c) Java



d) COBOL  
e) None of these  
Correct Answer: "b"

356. What is the full form of RAID?  
a) Redundant Array of Inexpensive Disks  
b) Replicated Array of Independent Data  
c) Redundant Array of Independent Disks  
d) Replicated module of Identity  
e) None of these  
Correct Answer: "c"

357. Which of the following are examples of Access network?  
a) ADSL  
b) ISP  
c) Mobile Network  
d) All of the Above  
e) None of these  
Correct Answer: "d"

358. A world wide web contains web pages \_\_\_\_\_  
(1) Residing in many computers  
(2) Created using HTML  
(3) With links to other web pages  
(4) Residing in many computers linked together using HTML  
(5) None of these  
Correct Answer: "4"

359. Which among the following correctly defines a Wide Area Network?  
a) Wide Area Network is quite bigger network than the LAN.  
b) The internet is one of the biggest WAN in the world.  
c) In a WAN network, messages are transmitted fast.  
d) All of the Above  
e) None of these  
Correct Answer: "d"

360. Which of the following is the location information application software?  
a) MATLAB  
b) Google  
c) ArcGIS  
d) Win  
e) None of these  
Correct Answer: "c"

361. What is the name given to any software that is included with a new computer, hardware, or other software program?  
a) Bundled Software  
b) Pre-installed Software  
c) Free Software  
d) Both a and b  
e) None of these  
Correct Answer: "d"

362. What is the name given to the computing infrastructure close to the sources of data?  
A. Edge Computing  
B. Embedded Computing  
C. Encrypted Computing  
D. None of the Above  
E. All of the above  
Correct Answer: "A"

363. What is the name given to the technique of connecting computers?  
a) Node  
b) Topology  
c) Architecture  
d) Ring  
e) None of these  
Correct Answer: "b"

364. Which of the following are the primary ways to enable LAN connections?  
a) Ethernet  
b) Wi-Fi  
c) Both a and b  
d) None of the Above  
Correct Answer: "c"



365. Direct Memory Access is used for \_\_\_\_.

- A) It is used for saving CPU Cycles
- B) It is used for Low Speed devices
- C) It is used for High Speed devices
- D) Both A and C
- E) None of these

Correct Answer: "D"

366. A \_\_\_\_\_ is a component of motherboard which absorbs the heat produced by the processor and other components of a computer.

- A) Heat sink
- B) Northbridge
- C) CPU Socket
- D) CMOS battery
- E) None of these

Correct Answer: "A"

367. Which of the following is the oldest web browser still in general use?

- a) Lynx
- b) Safari
- c) Internet Explorer
- d) Navigator
- e) Mosaic

Correct Answer: "a"

368. Accessing data on tapes is much ..... than that accessing data on disks.

- (1) Slower
- (2) Faster
- (3) Same
- (4) All of the above
- (5) None of these

Correct Answer: "1"

369. \_\_\_\_\_ is the process of dividing the disk into tracks and sectors.

- A) Tracking
- B) Formatting
- C) Crashing
- D) Allotting
- E) None

Correct Answer: "B"

370. Technique to implement virtual memory where memory is divided into units of fixed size memory is

- A. Paging
- B. De-fragments
- C. Segmentation
- D. Swapping
- E. None of the above

Correct Answer: "A"

371. \_\_\_\_\_ is a very high speed memory placed in between RAM and CPU.

- A. Magnetic disk
- B. Magnetic drum
- C. Virtual memory
- D. Cache memory
- E. None of the above

Correct Answer: "D"

372. Virtual memory is \_\_\_\_\_

- A. an extremely large main memory
- B. an extremely large secondary memory
- C. a type of used in super computers
- D. an illusion of extremely large main memory
- E. None of the above

Correct Answer: "D"

373. Which generation of computer uses integrated circuits?

- A) 1st generation
- B) 2nd generation
- C) 3rd generation
- D) 4th generation
- E) None of these

Correct Answer: "C"

374. Which of the following is not a valid type of mouse?

- A) Optical mouse
- B) Wireless mouse
- C) Magnetic mouse
- D) Trackball mouse
- E) None of these

Correct Answer: "C"

375. The point used to connect external device to the motherboard is known as?

- A) Bus
- B) Plug and play
- C) Port
- D) DMA
- E) None of these

Correct Answer: "C"

376. The software used in the banking system will be correctly defined as?

- A) System software
- B) Application software
- C) 5th generation software
- D) Interpreters
- E) None of these

Correct Answer: "B"

377. Letter 'G' is a valid in direct form in which of the following number system?

- A) Binary
- B) Decimal
- C) Hexadecimal
- D) All of these
- E) None of these

Correct Answer: "E"

378. A note or drawing added to a slide during a presentation in MS PowerPoint is called

- A) footnote
- B) annotation
- C) notation
- D) explanation
- E) comment

Correct Answer: "B"

379. The technology of connecting to the Internet via a phone line is called?

- A) WiMax
- B) VoLTE
- C) DSL
- D) Telnet
- E) None of these

Correct Answer: "C"

380. Name the technology that allows

one to experience and interact with images in a simulated three-dimensional environment.

- A) Webcam
- B) Video Conferencing
- C) Virtual Reality
- D) Live Streaming
- E) None of these

Correct Answer: "C"

381. What does C stands for in WWWC (W3C)?

- A) Computer
- B) Congress
- C) Consortium
- D) Community
- E) None of these

Correct Answer: "C"

382. While typing the URL of a website the term HTTP is followed by?

- A) ://
- B) :\\
- C) :/
- D) :\
- E) None of these

Correct Answer: "A"

383. Which virus affects the boot sector of a hard disk by altering the boot data?

- A) Macro Virus
- B) Cavity Virus
- C) File Viruses
- D) Cluster Virus
- E) None of these

Correct Answer: "E"

384. Virus affecting the instructions that are capable of performing series of task in a single go are called?

- A) Macro Virus
- B) Boot Sector Virus
- C) Memory Resident Virus
- D) Overwrite Viruses
- E) None of these

Correct Answer: "A"

385. The virus that encrypt or encode themselves in a different way whenever they are executed ,making it difficult for antivirus to catch them are known as?

- A) Tunning Viruses
- B) Boot record Virus
- C) Polymorphic Virus
- D) Ransomware
- E) None of these

Correct Answer: "C"

386. The program which appear to be useful software but will actually do damage once installed are termed as?

- A) Shareware
- B) Worms
- C) Trojans
- D) Wrong ware
- E) None of these

Correct Answer: "C"

387. A type of virus which replicates very fast without the need of host file is called?

- A) Worms
- B) Trojan
- C) Multipartite virus
- D) FAT Virus
- E) None of these

Correct Answer: "A"

388. How many character can be represent at a time by using 8 Bits?

- A) 8
- B) 256
- C) 255
- D) 1024
- E) None of these

Correct Answer: "E"

389. A computer which provides its services to other computer on a network is termed as?

- A) Backend system
- B) Client
- C) Server
- D) Gateway
- E) None of these

Correct Answer: "C"

390. The image or text verification used by computer systems to distinguish between human and bots/spam inputs is known as?

- A) Captcha
- B) tele-verification
- C) group policy
- D) firewall
- E) None of these

Correct Answer: "A"

391. The startup check by a computer to ensure the proper working of all attached

device is known as?

- A) BIOS
- B) POST
- C) CMOS
- D) SMPS
- E) None of these

Correct Answer: "B"

392. The transaction processing system in which the transaction is processed immediately without accumulation of transaction is known as?

- A) Batch processing
- B) OLTP
- C) Universal processing
- D) Operational processing
- E) None of these

Correct Answer: "B"

393. Which of the following is an example of decentralized, distributed database that maintains a continuously-growing list of ordered records and a link to a previous record?

- A) Relational Database
- B) Blockchain
- C) LTE Database
- D) Procedural Database
- E) None of these

Correct Answer: "B"

394. Statements :

- (i) Operating System is the main part of Application software
- (ii) Assembly language is made up of only 0s and 1s.
- (iii) Software provides easy to use interface to work with the hardware components.

- A) Only (i) and (ii) are true
- B) Only (ii) and (iii) are true
- C) Only (iii) is true
- D) Only (ii) is true
- E) None of these

Correct Answer: "C"

395. Which of the following address differentiates the computers connected in a network?

- A) IP Address
- B) Web Address
- C) Host Address
- D) MIC Address
- E) None of these

Correct Answer: "A"

396. CSS stands for?

- A) Corporate Style Sheet
- B) Computing System Sheet
- C) Cascading Style Sheet
- D) Communicative System Sheet
- E) None of these

Correct Answer: "C"

397. Which of the following is not a valid protocol of internet system?

- A) UDP
- B) ADSL
- C) SNMP
- D) ICMP
- E) None of these

Correct Answer: "B"

398. The moving text that appears on websites are known as?

- A) bitmap
- B) marquee
- C) text-stiller
- D) animator
- E) None of these

Correct Answer: "B"

399. GUI based operating system are based on the concept of?

- A) LIFO
- B) FIFO
- C) WYSIWYG
- D) LIFO
- E) None of these

Correct Answer: "C"

400. Which of the following is the highest unit of storage in computer field?

- A) Pijabyte
- B) Exabyte
- C) Terabyte
- D) Zettabyte
- E) None of these

Correct Answer: "A"

401. Which language among these is related to Artificial Intelligence?

- A) Basic
- B) Prolog
- C) Cobol
- D) C++
- E) None of these

Correct Answer: "B"

402. The concept of SQL is related to which generation of language?

- A) Second Generation Language
- B) Third Generation Language
- C) Fourth Generation Language
- D) Fifth Generation Language
- E) None of these

Correct Answer: "C"

403. Which of the following application software suite will be best suited for basic data calculation and analysis?

- A) Database
- B) Text Editor
- C) Spreadsheet
- D) DTP Software
- E) None of these

Correct Answer: "C"

404. A person running a photo editing shop may not require which of the following software?

- A) Pagemaker
- B) Coreldraw
- C) Photoshop
- D) Outlook Express
- E) None of these

Correct Answer: "D"

405. Which of the following does not represent a compressed file type?

- A) .RAR
- B) .ZIP
- C) .7z
- D) .EXE
- E) None of these

Correct Answer: "D"

406. The process of identifying and removing errors from programs is called?

- A) SDLC
- B) Bug
- C) Debugging
- D) Testing

Correct Answer: "C"

407. Find the correct statement in relation to hard disk.

- A) Sectors are divided into tracks and platters
- B) Tracks are divided into sectors and platters
- C) Platters are divided into tracks and sectors
- D) Platters are divided into rows and column

Correct Answer: "C"

408. What is the full form of PDF?

- A) Presentation Document File
- B) Pre Document File
- C) Portable Document Format
- D) Post Document Format

Correct Answer: "C"

409. A local or restricted network in which information is accessible only within this private network is known

as?

- A) Extranet
- B) Intranet
- C) Cloud system
- D) WWW

Correct Answer: "B"

410. When an Intranet can be accessed by outside users for the purpose of information exchange then It is known as?

- A) Public Intranet
- B) Extranet
- C) Secured WWW
- D) Ultranet

Correct Answer: "B"

411. Which of the following is the correct binary representation of decimal number 23?

- A) 10101
- B) 11011
- C) 11010
- D) 10111

Correct Answer: "D"

412. The term Large scale integration is related with?

- A) Hard Disk
- B) SMPS
- C) Chip
- D) Monitor

Correct Answer: "C"

413. Which of the following is used to connect a computer to computer network?

- A) Network Interface Card
- B) Network Integrity Card
- C) Network Information Connection
- D) Network Information Card

Correct Answer: "A"

414. Which of the following unit can represent the speed of internet connection?

- A) bps
- B) mhz
- C) kb
- D) bytes



Correct Answer: "A"

415. Which of the following is not a display technology used in computer monitors?

- A) LCD
- B) TFT
- C) CRT
- D) MRT

Correct Answer: "D"

416. Two computers can be connected directly for the purpose of file sharing using \_\_\_\_?

- i) Ethernet ii) Wifi iii) Bluetooth
- A) Both i) and iii)
- B) Both ii) and iii)
- C) Both i) and ii)
- D) All

Correct Answer: "D"

417. The distortion caused in signals over network channel is termed as?

- A) Repeaters
- B) Attenuation
- C) Gateways
- D) Bridges

Correct Answer: "B"

418. The point of inter connections in a network is known as \_\_\_\_?

- A) protocol
- B) nodes
- C) client
- D) bus

Correct Answer: "B"

419. When a computer is booted, BIOS retrieves its information from \_\_\_\_?

- A) RAM
- B) CMOS chip
- C) Hard Disk
- D) Cache

Correct Answer: "B"

420. Find the odd one out

- A) .doc
- B) .txt

C) .xls

D) .rtf

Correct Answer: "C"

421. "Justify" in MS Word is related to?

- A) Paragraph Alignment
- B) Page Indent
- C) Page Orientation
- D) Paragraph length

Correct Answer: "A"

422. Unauthorized copying and distribution of copyright material in computer world is known as \_\_\_\_?

- A) Spoofing
- B) EULA
- C) Piracy
- D) Hacking

Correct Answer: "C"

423. The principle that Internet service providers should enable access to all content and applications equally regardless of the source is known as?

- A) Net Servicing
- B) Net Equality
- C) Net Neutrality
- D) Fair Usage Policy

Correct Answer: "C"

424. The device used to carry out card payment at retail location is known as?

- A) PoS
- B) OMR
- C) ATM
- D) CDM

Correct Answer: "A"

425. Which of the following is not an Impact Printer?

- A) Dot Matrix
- B) Line Printer
- C) Daisy Wheel Printer
- D) Thermal Printer

Correct Answer: "D"

426. Name the device which keeps the computer units powered up during time of



power cut.

- A) SMPS
- B) UPS
- C) DSL
- D) UDP

Correct Answer: "B"

427. Which of the following represents the smallest storage space?

- A) 1024 GB
- B) 512 TB
- C) 1024 MB
- D) 1024 ZB

Correct Answer: "C"

428. Which of the following is not an example of Optical Disk?

- A) CD
- B) DVD
- C) Hard Disk
- D) Blue Ray Disk

Correct Answer: "C"

429. The measure of the degree of sharpness of a displayed image is known as?

- A) CMYK
- B) Anchor
- C) Resolution
- D) Raster

Correct Answer: "C"

430. Which of the following is not an Operating system of Computer?

- A) Windows 2000
- B) Symbian OS
- C) Mandriva
- D) Linux

Correct Answer: "B"

431. The device used to connect two networks having different architecture and model is?

- A) Hub
- B) Switch
- C) Modem
- D) Gateway

Correct Answer: "D"

432. A situation when a computer software stops working and encounters an error is known as?

- A) Flash
- B) Cache
- C) Crash
- D) Command

Correct Answer: "C"

433. The speed of the computer microprocessor is measured based on?

- A) RAM speed
- B) Port Speed
- C) Bus Speed
- D) Clock Speed

Correct Answer: "D"

434. A warm boot in older versions of Windows is caused by:

- (1) Typing the Alt+ Tab key combination
- (2) Selecting Hibernate or Standby when shutting down
- (3) Typing the Ctrl+ Alt+ Delete key combination
- (4) Pressing the power switch
- (5) None of these

Correct Answer: 3

435. Setting fonts for the text in your document is an example of:

- (1) Formatting.
- (2) Formulas.
- (3) Tracking changes.
- (4) Tools.
- (5) None of these

Correct Answer: 1

436. \_\_\_\_\_ is the file system used by the operating system to identify the physical locations of files on the hard drive.

- (1) RTOS
- (2) GIF
- (3) FAT
- (4) POST
- (5) None of these

Correct Answer: 3

437. A server uses \_\_\_\_\_ applications software to support its client computers.

- (1) back-end
- (2) front end
- (3) programming
- (4) java
- (5) none of these

Correct Answer: 1

438. Help Menu is available at which button?

- (1) End
- (2) Start
- (3) Turnoff
- (4) Restart
- (5) Reboot

Correct Answer: 2

439. A connection from one HTML document to another HTML document is called \_\_\_\_

- (1) Hyper Link
- (2) Connecting Link
- (3) Icon
- (4) All of these
- (5) None of these

Correct Answer: 1

440. The \_\_\_\_\_ records the name and exact location of every file on a disk.

- (1) partition master
- (2) file allocation table
- (3) disk controller
- (4) boot sector
- (5) None of these

Correct Answer: 2

441. A \_\_\_\_\_ is a software component that lets the operating system and a device communicate with each other by specifying the computer's operating system exactly how to work with that hardware.

- A) mediator
- B) driver
- C) BUS
- D) utility

E) None of these

Correct Answer: "B"

442. The pattern in which nodes are connected in a network is known as?

- A) Network Connectivity
- B) Network Methodology
- C) Network Alignment
- D) Network Topology
- E) None of these

Correct Answer: "D"

443. Web Address is also known as?

- A) IP Address
- B) URL
- C) Web Page
- D) Home Page
- E) None of these

Correct Answer: "B"

444. Find the Odd one out.

- A) MS Word : Text
- B) MS PowerPoint : Presentation
- C) MS FrontPage : Web Site
- D) Firefox : Web Site
- E) None of these

Correct Answer: "D"

445. A computer on the network that utilizes the service of server computer is known as?

- A) Client
- B) Liveware
- C) Bot
- D) Server ware
- E) None of these

Correct Answer: "A"

446. The pre-defined configuration or setting of a system or an application is known as ?

- A) dynamic setting
- B) pre-customed setting
- C) customized setting
- D) default setting
- E) None of these

Correct Answer: "D"

447. A text-based expression of emotion created from ASCII characters that mimics a facial expression is known as?

- A) Smiler
- B) Expressor
- C) Emoticon
- D) Emofier
- E) None of these

Correct Answer: "C"

448. Which of the following term would best define an Operating System?

- A) Utility
- B) Motherboard
- C) Platform
- D) Play-and-Play
- E) None of these

Correct Answer: "C"

449. Android Operating System is based on \_\_\_\_\_?

- A) Windows Kernel
- B) Linux Kernel
- C) Java Kernel
- D) Symbian Kernel
- E) None of these

Correct Answer: "B"

450. A website for discussion or an informational site published on the world wide web is known as \_\_\_\_?

- A) Blog
- B) Calloc
- C) Home Page
- D) Instant Messenger
- E) None of these

Correct Answer: "A"

451. \_\_\_\_\_ is a region of a physical memory storage used to temporarily store data while it is being moved from one place to another.

- A) Motherboard
- B) Circuit
- C) Buffer
- D) ROM
- E) None of these

Correct Answer: "C"

452. The medium used for communication in a network is also known as \_\_\_\_ ?

- A) Channel
- B) Bandwidth
- C) Frequency
- D) Attenuation
- E) None of these

Correct Answer: "A"

453. In respect to display technology what does "F" stands for in TFT?

- A) File
- B) Form
- C) Film
- D) Future
- E) None of these

Correct Answer: "C"

454. The process of encoding an information in such a way that it cannot be read without

proper authorization is known as \_\_\_\_?

- A) Encapsulation
- B) Encryption
- C) Decryption
- D) Abstraction
- E) None of these

Correct Answer: "B"

455. FAT in computer, is related to?

- A) RAM
- B) Hard Disk
- C) Monitor
- D) CPU
- E) None of these

Correct Answer: "B"

456. Flash Memory is a types of \_\_\_\_ ?

- A) Volatile memory
- B) Non Volatile memory
- C) RAM memory
- D) ROM memory
- E) None of these

Correct Answer: "B"

457. The statement "If you feed wrong data to the computer, it will give you the wrong output" is best described in?

- A) FIFO
- B) GIGO
- C) LIFO
- D) LILO
- E) None of these

Correct Answer: "B"

458. Which of the following is not a programming language?

- A) LISP
- B) MIPS
- C) SQL
- D) Java Script
- E) None of these

Correct Answer: "B"

459. All of the following are considered to be storage devices EXCEPT \_\_\_\_\_

- (1) floppy disk
- (2) CPU
- (3) CD
- (4) hard disk drive
- (5) none of these

Correct Answer: 2

450. One megabyte equals approximately \_\_\_\_\_

- 1) 1,000 bits
- 2) 1,000 bytes
- 3) 1 million bytes
- 4) 1 million bits
- 5) 2,000 bytes

Correct Answer: 3

451. A computer checks the \_\_\_\_\_ of user names and passwords for a match before granting access.

- (1) Website
- (2) Network
- (3) Backup file
- (4) Data base
- (5) None of these

Correct Answer: 4

452. What is the term for unsolicited e-mail?

- (1) News group
- (2) Use net
- (3) Backbone
- (4) Flaming
- (5) Spam

Correct Answer: 5

453. When sending an e-mail, the \_\_\_\_\_ line describes the contents of the message.

- (1) to
- (2) subject
- (3) contents
- (4) CC
- (5) None of these

Correct Answer: 2

454. The \_\_\_\_\_ key will launch the start buttons.

- (1) Esc
- (2) Shift
- (3) Logo
- (4) Shortcut
- (5) None of these

Correct Answer: 3

455. What is object of UPS?

- (1) Using for storage
- (2) To increase the speed of a computer
- (3) Provides backup power
- (4) All of these
- (5) None of these

Correct Answer: 3

456. Documents converted to ..... can be published to the Web.

- (1) .doc file
- (2) http
- (3) machine language
- (4) HTML
- (5) none of these

Correct Answer: 4

457. Which of the following printers generates character from a grid?

- (1) Inkjet
- (2) Laser
- (3) Daisy wheel
- (4) Dot matrix

(5) None of these

Correct Answer: 4

458. In MS-Word 'alt + shift + d' does what?

- (1) Automatically inserts the date
- (2) Automatically Inserts the time
- (3) Inserts the day
- (4) All of the above
- (5) None of these

Correct Answer: 1

459. What does 'ctrl +esc' do?

- (1) Shows the start menu
- (2) shows the format menu
- (3) Shows the tools menu
- (4) shows the insert menu
- (5) None of these

Correct Answer: 1

460. Which of the following best defines embedded system?

- (1) A program that comes wrapped in a box
- (2) A program that is permanent part of a computer
- (3) A computer that is a part of a larger computer
- (4) A computer and software system that controls a machine
- (5) None of these

Correct Answer: 4

461. Digital video consists of a series of \_\_\_\_\_

- (1) Media clips
- (2) Captures
- (3) Frames
- (4) Pictures
- (5) none of these

Correct Answer: 3

462. Which of the following is NOT an example of system maintenance?

- (1) Replacing user interfaces
- (2) Making backup copies of files
- (3) Adding, deleting, adjusting records
- (4) Providing system security
- (5) none of these

Correct Answer: 1

463. If you change Windows 98 to Windows XP, you are actually performing .....

- (1) Upstart
- (2) upgrade
- (3) update
- (4) patch
- (5) None of these

Correct Answer: "2"

464. To make a copy of the current document to disk .....

- (1) Use the 'Save' command
- (2) This cannot be done
- (3) Use the 'duplicate' command
- (4) Copy the document
- (5) Use the 'save as' command

Correct Answer: "5"

465. Your position in the text is shown by a .....

- (1) Blinker
- (2) Cursor
- (3) Causer
- (4) Pointer
- (5) None of these

Correct Answer: "2"

466. When the pointer is positioned on a.....it is shaped like a hand.

- (1) Grammar error
- (2) Formatting error
- (3) Screen Tip
- (4) Spelling error
- (5) hyperlink

Correct Answer: "5"

467. A device, which is not connected to CPU, is called as .....

- (1) land-line device
- (2) On-line device
- (3) Off-line device
- (4) Device
- (5) None of the above

Correct Answer: "3"



468. The first graphical web browser are?

- (1) BING
- (2) EDGE
- (3) Alltheweb
- (4) Mosaic
- (5) WWW

Correct Answer: "4"

469. The term overflow means?

- (1) An excess of Internal storage
- (2) An excess of external storage
- (3) A situation where record cannot fit in to its right place
- (4) A device, which controls the level of humidity in the computer room
- (5) None of these

Correct Answer: "1"

470. Rotational delay time is also known as

- (1) Seek time
- (2) Shift time
- (3) Latency
- (4) Access time
- (5) None of these

Correct Answer: "3"

471. Pascal is

- (1) A high-level programming language
- (2) Named after Blaise Pascal
- (3) Named after mathematician that facilitates structured programming techniques
- (4) All of the above
- (5) None of these

Correct Answer: "4"

472. The point at which the flow of text in a document moves to the top of a new page—

- (1) Page insert
- (2) Page break
- (3) Page format
- (4) All of the above
- (5) None of these

Correct Answer: "2"

473. Multiprocessor is a computer system—

- (1) Where many CPU under a common control
- (2) Consisting of more than one input devices under common control
- (3) Where many output devices under
- (4) All of the above
- (5) None of these

Correct Answer: "1"

474. A mistake in an algorithm that causes incorrect results is called a

.....

- (1) Logical error
- (2) Syntax error
- (3) Machine Error
- (4) Compiler error
- (5) None of these

Correct Answer: "1"

475. Ctrl + D is short cut used for ?

- (A) Open Dialogue Box
- (B) Font Dialogue Box
- (C) Save as Dialogue Box
- (D) Save Dialogue Box

Correct Answer : B

476. WORM is a data storage technology that prevents the drive from erasing the data. What is the full form of WORM?

- 1. Write Out, Read Many
- 2. Write Once, Read More
- 3. Write Once, Read Much
- 4. Write Over, Read Mode
- 5. Write Once, Read Many

Correct Answer – "5"

477. Which one of the following software applications would be the most appropriate for performing numerical and statistical calculations?

- 1. Database
- 2. Spreadsheets
- 3. Graphics Package
- 4. Document Processor
- 5. Slide Presentation

Correct Answer – "2"



478. Which among the following is not an input device?

1. Light pen
2. Plotter
3. Track ball
4. Microphone
5. Keyboard

Correct Answer – “2”

479. Which of the following technologies were used by third-generation computers?

1. Transistors
2. Integrated circuits
3. Vacuum tubes
4. VLSI
5. Semiconductor

Correct Answer – “2”

480. Which of the devices converts drawing, printed text or other images into digital form?

1. Keyboard
2. Scanner
3. Plotter
4. OMR
5. Photocopier

Correct Answer – “2”

481. Which of these companies own the search engine Bing?

1. Google
2. Microsoft
3. Amazon
4. IBM
5. Yahoo

Correct Answer – “2”

482. Which menu option is used to add Header and Footer in a document?

1. File
2. Review
3. References

4. Insert
5. Mailings

Correct Answer – “4”

483. What do we call the pictorial representation that uses predefined symbols to describe either the logic of a computer program or the data flow and processing steps of a system?

1. Flowchart
2. Algorithm
3. Block diagram
4. Loop
5. Array

Correct Answer – “1”

484. Which among the following is a device that is used in computers to add external components?

1. Storage Device such as USB
2. Keyboard
3. Ports / System Boards
4. RAM
5. ROM

Correct Answer – “3”

485. Which among the following is the most common source of Viruses to the hard disk of your computer?

1. Incoming Email
2. Outgoing Email
3. CD-ROM
4. Websites
5. Web Pages

Correct Answer – “1”

486. Which among the following is used for removing a software bug / defect which is available for free of cost from the software provider?

1. Version
2. Update
3. Help

4. Patch
5. Upgrade

Correct Answer – “4”

487. Which of the following keys is not found in normal computers / laptops?

1. Turn
2. Alt
3. Del
4. Shift
5. ctrl

Correct Answer – “1”

488. Structured programming languages such as C, COBOL and FORTRAN were used in which of the following computers?

1. First Generation Computers
2. Second Generation Computers
3. Third Generation Computers
4. Fourth Generation Computers
5. Fifth Generation Computers

Correct Answer – “3”

489. Which of the following generations of computers is associated with artificial intelligence?

1. First
2. Second
3. Third
4. Fourth
5. Fifth

Correct Answer – “5”

490. A file which has not been altered, compressed, or manipulated in any way by the computer is called?

1. temp file
2. raw file
3. permanent file
4. directory files
5. ordinary files

Correct Answer – “2”

491. In a computer file system which among the following is top or first in hierarchy?

1. root directory
2. parent directory
3. home directory
4. working directory
5. Current directory

Correct Answer – “1”

492. When some unidentified / unknown person / firm sends you mail in a trustworthy / lucrative way asking for sensitive banks and online payment information, this is a case of \_\_\_\_\_ ?

1. Spam
2. Hacking
3. Phishing
4. Theft
5. Cyber crime

Correct Answer – “3”

493. A network that is connected to the Internet, but uses encryption to scramble all the data sent through the Internet is called?

1. Universal network
2. Wireless Network
3. Social Network
4. Personal Area Network
5. Virtual private Network

Correct Answer – “5”

494. The terms Goodput, Throughput and Maximum throughput are most closely associated with which among the following in computers?

1. Bit Rate
2. Response Time
3. Command Line Interface
4. Random memory
5. Real Time

Correct Answer – “1”

495. \_\_\_\_\_ is a communication technology used by some incoming mail servers.

1. TCP
2. POP
3. FTP
4. Telnet
5. IP

Correct Answer – “2”

496. The process of transferring files from a computer on the Internet to your computer is called?

1. Downloading
2. Uploading
3. FTP
4. JPEG
5. PNG

Correct Answer – “3”

497. \_\_\_\_\_ is an area of a computer that temporarily holds data waiting to be processed, stored or output.

1. Storage
2. Motherboard
3. CPU
4. Memory
5. Peripherals

Correct Answer – “4”

498. \_\_\_\_\_ is a collection of data that is organized so that its contents can easily be accessed, managed and updated.

1. Data warehouse
2. Data mining
3. Database
4. Data dictionary
5. Directory

Correct Answer – “3”

499. \_\_\_\_\_ controls the way in which the computer system functions and provides a means by which users can interact with the computer.

1. The platform
2. The motherboard
3. Application software
4. The operating system
5. System software

Correct Answer – “4”

500. The basic unit of a worksheet into which you enter data in Excel is called a

1. Tab
2. Cell
3. Box
4. Range
5. row

Correct Answer – “2”

**Oliveboard** #AceGA

# **TODAY'S NEWS ANALYSIS TNA**

Everyday at 8 AM (Mon to Sat)

*Toppers' Recommended  
Daily Current Affairs Show  
for Bank Exams*

with **Aditya Sir**

**FREE Ebooks**

[Download Now](#)

**Current Affairs**

[Explore Now](#)

**FREE MOCK TESTS + TOPIC TESTS + SECTIONAL TESTS**

**For Banking, Insurance, SSC & Railways Exams**

[Web](#)

[APP](#)

**BLOG**

Your one-stop destination  
for all exam related  
information & preparation  
resources.

[Explore Now](#)

**FORUM**

Interact with peers & experts,  
exchange scores  
& improve your preparation.

[Explore Now](#)



[www.OliveBoard.in](http://www.OliveBoard.in)